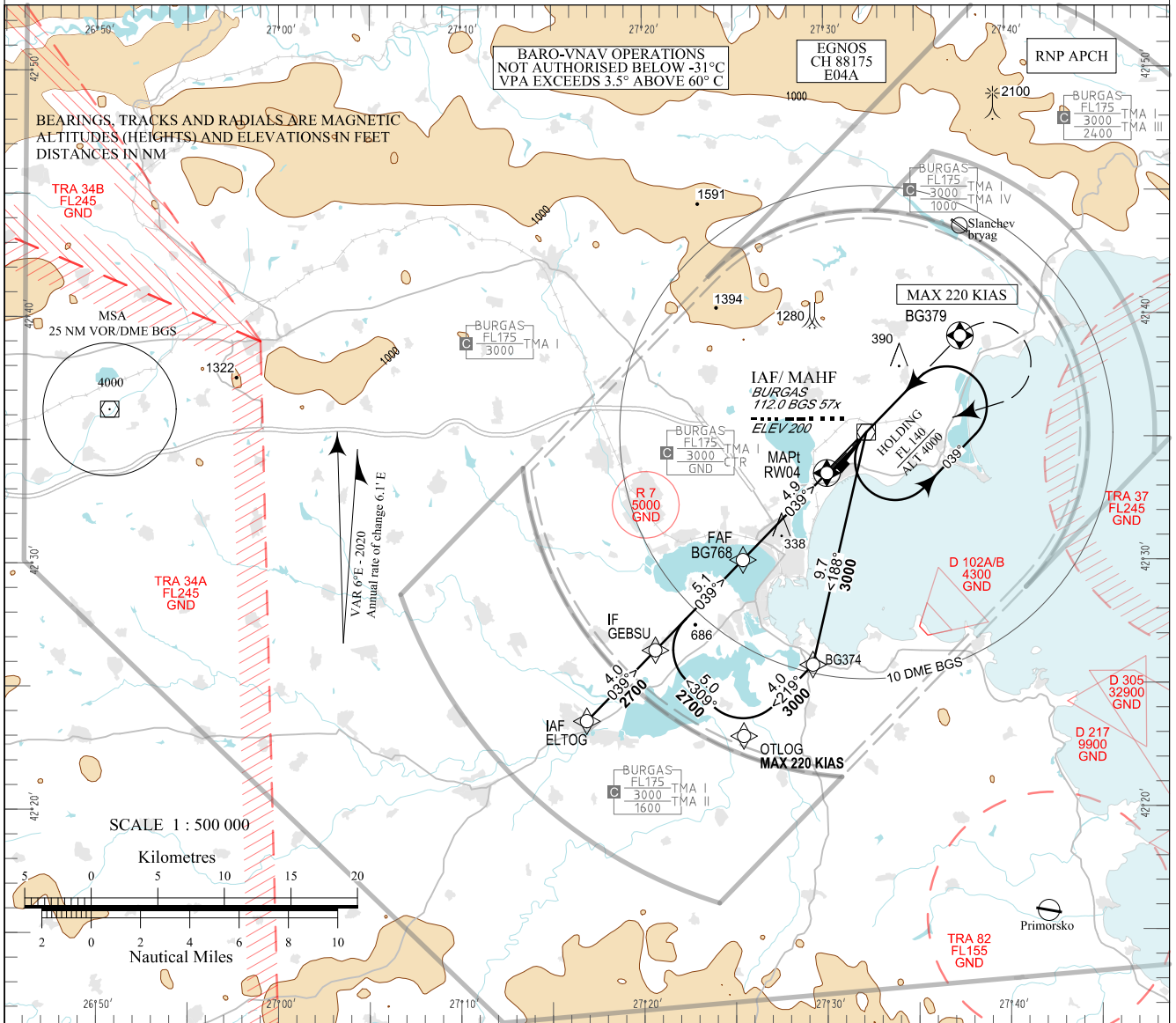


**INSTRUMENT  
APPROACH  
CHART - ICAO**

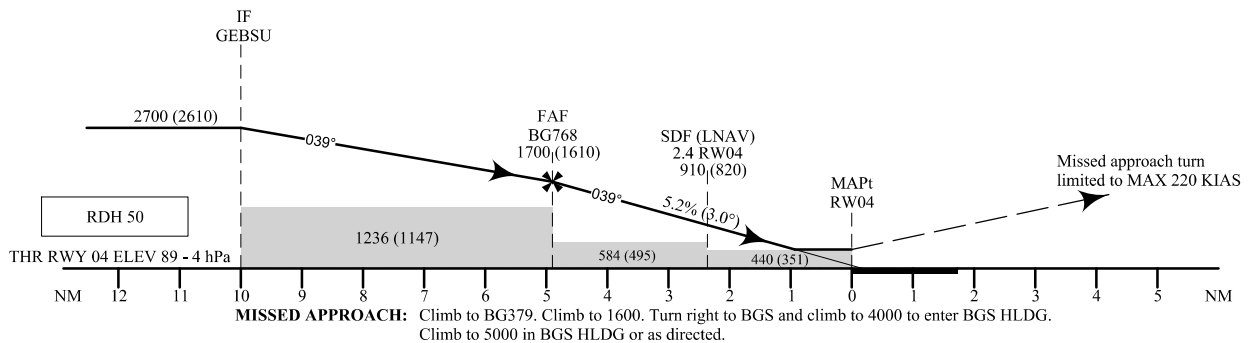
AERODROME ELEV 135 - 5 hPa  
THR RWY 04 ELEV 89 - 4 hPa  
OCH RELATED TO THR RWY 04 ELEV  
CIRCLING OCH RELATED TO AD ELEV

APP 125.100 TWR 118.000 ATIS 126.980  
119.650 120.000  
378.350 336.400  
121.500 121.500  
243.000 243.000

**BURGAS  
RNP  
RWY 04**



TRANSITION ALTITUDE  
10500 FT



OCA (OCH)		A	B	C	D
LPV	m	123 (96)	126 (99)	129 (102)	132 (105)
	ft	403 (314)	415 (326)	423 (334)	434 (345)
LNAV/VNAV	m	125 (100)	130 (105)	135 (105)	135 (110)
	ft	410 (330)	420 (340)	430 (350)	440 (360)
LNAV	m	135 (110)		140 (115)	145 (120)
	ft	440 (360)		450 (370)	470 (390)
Circling	m	185 (145)	220 (180)	350 (310)	515 (475)
	ft	600 (470)	700 (570)	1150 (1020)	1680 (1550)

DIST THR NM / km	4.0 / 7.4	3.0 / 5.6	2.0 / 3.7
ALT (HGT) m	430 (405)	335 (305)	235 (210)
ALT (HGT) ft	1410 (1320)	1090 (1010)	780 (690)

GS	kt	60	80	100	120	140	160	180
FAF - MAPt 4.9 NM	min:sec	4:54	3:41	2:56	2:27	2:06	1:50	1:38
Rate of descent	ft/min	318	425	531	637	743	849	955

Timing is not authorized for defining MAPt

Instrument approach procedures

P/T	WPT ID	Flyover	Track / MAG (GEO)	DIST/ NM	Turn Direction	Speed/ KT	ALT/ FT
<b>From IAF BGS</b>							
IF	BGS / IAF	-	-	-	-	-	-
TF	BG374	-	188°(193.3°T)	9.7	Right	-	-
TF	OTLOG	-	219°(224.4°T)	4.0	Right	220-	3000+
TF	GEBSU / IF	-	309°(314.3°T)	5.0	Right	190-	2700+
TF	BG768 / FAF	-	039°(044.3°T)	5.1	-	-	1700+
TF	RW04 / MAPt	Yes	039°(044.3°T)	4.9	-	-	-
CF	BG379	Yes	039°(044.4°T)	-	-	-	-
CA	-	-	039°(044.4°T)	-	Right	220-	1600+
DF	BGS / MAHF	Yes	-	-	-	-	4000+
<b>From IAF ELTOG</b>							
IF	ELTOG / IAF	-	-	-	-	220-	4000+
TF	GEBSU / IF	-	039°(044.2°T)	4.0	-	190-	2700+
TF	BG768 / FAF	-	039°(044.3°T)	5.1	-	-	1700+
TF	RW04 / MAPt	Yes	039°(044.3°T)	4.9	-	-	-
CF	BG379	Yes	039°(044.4°T)	-	-	-	-
CA	-	-	039°(044.4°T)	-	Right	220-	1600+
DF	BGS / MAHF	Yes	-	-	-	-	4000+

Holding

P/T	WPT ID	Flyover	Track / MAG (GEO)	Time	Turn Direction	Speed/ KT	ALT/ FT
HM	BGS	Yes	219°(224.4°T)	1min	Left	-	4000+

See pages LBBG AD 2 - 61.1 and LBBG AD 2 - 61.2 for waypoint coordinates

**SBAS FAS Data Block Burgas RNP RWY 04**

Data Field	Data Value
Operation Type	0
SBAS Provider	1 (EGNOS)
Airport Identifier	LBBG
Runway	04
Runway Letter	0 (None)
Approach Performance Designator	0
Route Indicator	
Reference Path Data Selector	0
Reference Path Identifier	E04A
LTP/FTP Latitude	423335.3835N
LTP/FTP Longitude	0273005.7645E
LTP/FTP Ellipsoidal Height (m)	65.4
FPAP Latitude	423449.5580N
Delta FPAP Latitude (seconds)	74.1745
FPAP Longitude	0273143.9890E
Delta FPAP Longitude (seconds)	98.2245
Threshold Crossing Height (ft)	50.0
TCH Units Selector	0 (feet)
Glidepath Angle (degrees)	3.00
Course Width (m)	105.00
Length Offset (m)	0
HAL (m)	40.0
VAL (m)	50.0
CRC Value	B2A7B9A7
Data Block Hexadecimal Representation	10 07 02 02 0C 04 00 00 01 34 30 05 2F C3 43 12 89 6A CD 0B 8E 16 7D 43 02 61 FF 02 F4 01 2C 01 64 00 C8 FA B2 A7 B9 A7

**Required Additional Data (not CRC wrapped)**

Data Field	Data Value
ICAO Code	LB
LTP/FTP Orthometric Height (m)	27.2

INTENTIONALLY LEFT BLANK