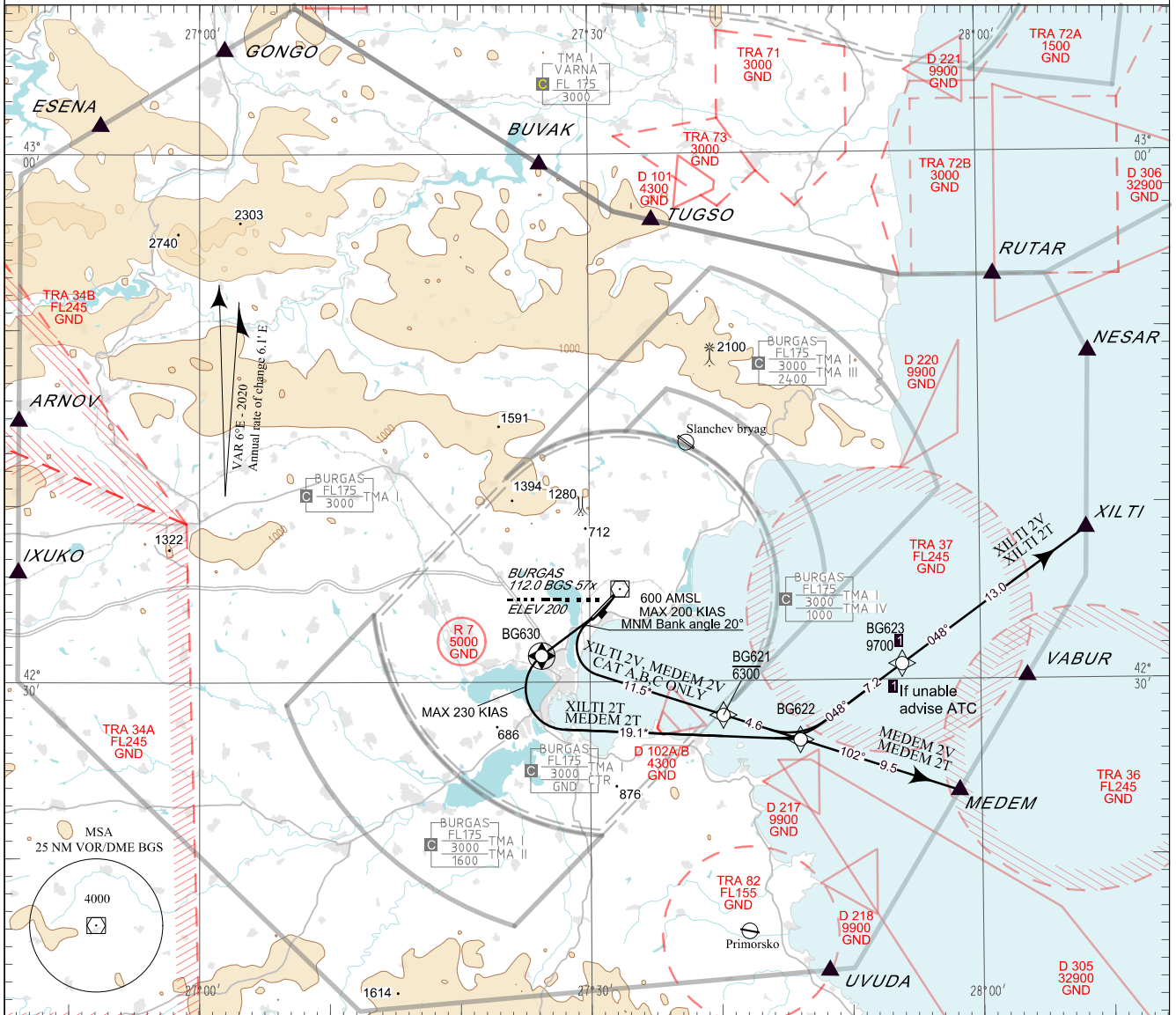


**STANDARD DEPARTURE CHART -  
INSTRUMENT (SID) - ICAO**

TRANSITION ALT 10500 FT    APP 125.100    TWR 118.000    ATIS 126.980  
TRANSITION LEVEL BY ATC    119.650    120.000  
378.350    336.400  
121.500    121.500  
243.000    243.000

**BURGAS  
RNAV RWY 22 EAST**  
MEDEM 2V, MEDEM 2T,  
XILTI 2V, XILTI 2T



**PBN**

RNAV 1  
GNSS or DME/DME/IRU required.

**Critical DME**

EMO, VRB on MEDEM 2T, MEDEM 2V  
EMO, VRB, WRN on XILTI 2T, XILTI 2V

**Non RNAV 1 ACFT:**

Report "UNABLE RNAV" at first contact to ATC.  
Expect OMNIDIRECTIONAL DEPARTURE and/or  
vectoring to be provided by ATC

**OMNIDIRECTIONAL DEPARTURE:**

Climb on R-227 BGS VOR to 5000 FT, turn to the  
corresponding point or as cleared by ATC  
MNM climb gradient of 5% (304 FT/NM) to 4000 FT

**AFTER TAKE-OFF:**

Immediately contact BURGAS APP

Strict compliance with departure procedures is necessary. If  
unable to comply inform ATC in good time so that alternative  
clearance can be issued.

**WARNING:**

When given a clearance to a level higher than the specified in  
the SID, follow published SID profile, unless restrictions are  
explicitly cancelled by ATC.

**Climb:**

MNM climb gradient of 5% (304 FT/NM) to 4000 FT for  
MEDEM 2T and XILTI 2T due to airspace restrictions.

MNM climb gradient of 7% (425 FT/NM) to 3500 FT for  
MEDEM 2V and XILTI 2V due to airspace restrictions.

P/T	WPT ID	Flyover	Track MAG (GEO)	DIST NM	Turn Direction	Speed KT	ALT FT	Additional requirements
<b>MEDEM 2T</b> MEDEM TWO TANGO DEPARTURE								
<i>MNM climb gradient of 5% (304 FT/NM) to 4000FT AMSL.</i>								
CA	-	-	219°(224.4°T)	-	Right	-	500+	-
DF	BG630	Yes	-	-	Left	230-	-	-
DF	BG622	-	-	-	Right	-	-	-
TF	MEDEM	-	102°(108.1°T)	9.5	-	-	-	-
<b>MEDEM 2V</b> MEDEM TWO VICTOR DEPARTURE								
<b>Only for CAT A, B, C aircraft</b> <i>MNM climb gradient of 7% (425 FT/NM) to 3500FT AMSL.</i>								
CA	-	-	219°(224.4°T)	-	Left	200-	600+	MNM Bank angle 20°
DF	BG621	-	-	-	-	-	6300-	-
TF	MEDEM	-	102°(108.0°T)	14.1	-	-	-	-
<b>XILTI 2T</b> XILTI TWO TANGO DEPARTURE								
<i>MNM climb gradient of 5% (304 FT/NM) to 4000FT AMSL.</i>								
CA	-	-	219°(224.4°T)	-	Right	-	500+	-
DF	BG630	Yes	-	-	Left	230-	-	-
DF	BG622	-	-	-	Left	-	-	-
TF	BG623	-	048°(053.8°T)	7.2	-	-	-	Expected ALT 9700+ If unable to comply advise ATC
TF	XILTI	-	048°(053.9°T)	13.0	-	-	-	-
<b>XILTI 2V</b> XILTI TWO VICTOR DEPARTURE								
<b>Only for CAT A, B, C aircraft</b> <i>MNM climb gradient of 7% (425 FT/NM) to 3500FT AMSL.</i>								
CA	-	-	219°(224.4°T)	-	Left	200-	600+	MNM Bank angle 20°
DF	BG621	-	-	-	-	-	6300-	-
TF	BG622	-	102°(108.0°T)	4.6	Left	-	-	-
TF	BG623	-	048°(053.8°T)	7.2	-	-	-	Expected ALT 9700+ If unable to comply advise ATC
TF	XILTI	-	048°(053.9°T)	13.0	-	-	-	-

See page LBBG AD 2 - 61.1 for waypoint coordinates