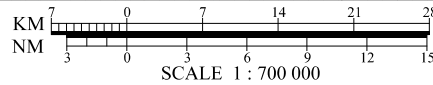
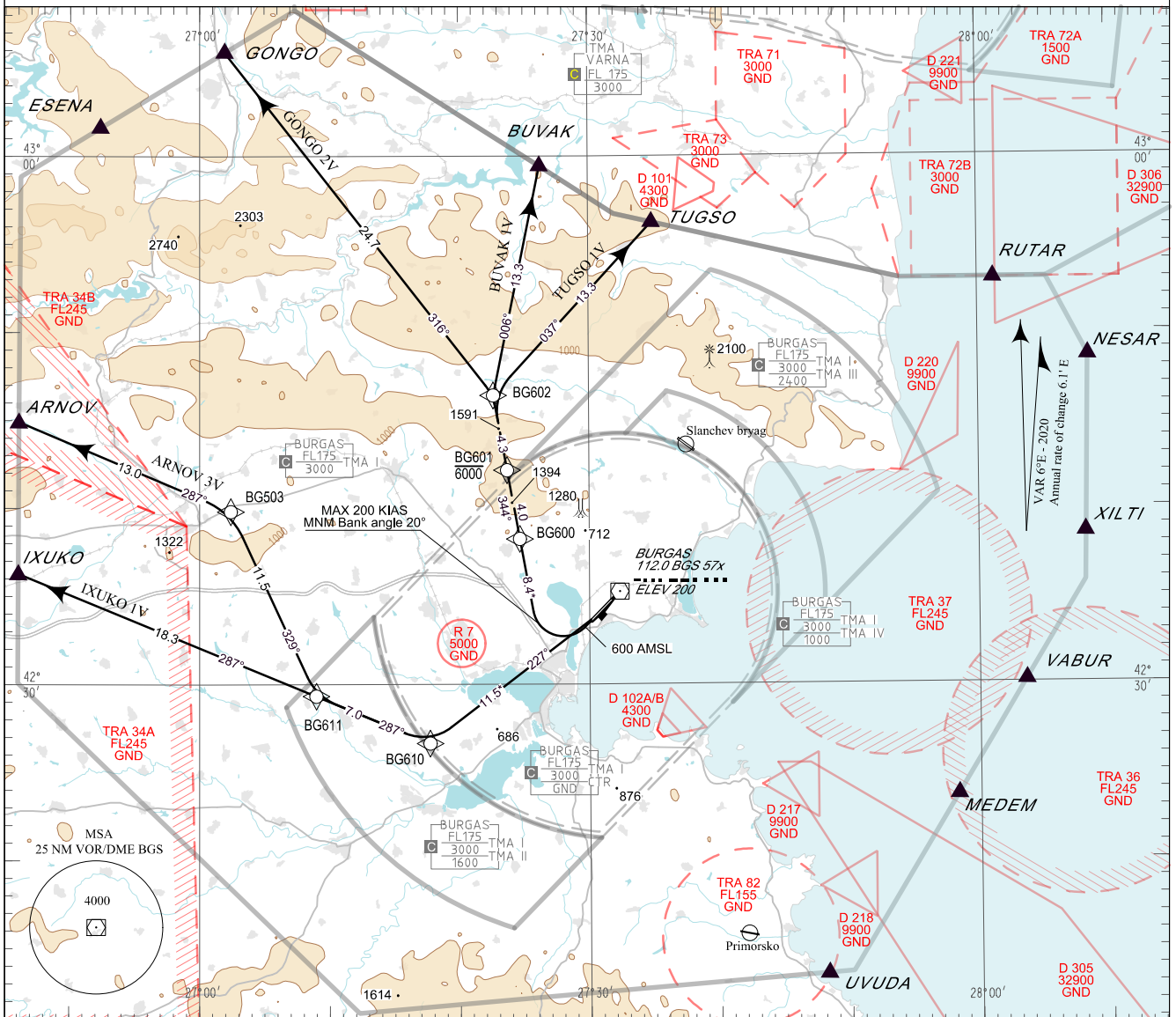


**STANDARD DEPARTURE CHART -
INSTRUMENT (SID) - ICAO**

TRANSITION ALT 10500 FT
TRANSITION LEVEL BY ATC

APP	125.100	TWR	118.000	ATIS	126.980
	119.650		120.000		
	378.350		336.400		
	121.500		121.500		
	243.000		243.000		

BURGAS
RNAV RWY 22 WEST
ARNOV 3V, BUVAK 1V, GONGO 2V,
IXUKO 1V, TUGSO 1V



BEARINGS, TRACKS AND RADIALS ARE MAGNETIC
ALTITUDES (HEIGHTS) AND ELEVATIONS IN FEET
DISTANCES IN NM
* Distances marked by * are approximate distances from DER

PBN

RNAV 1
GNSS or DME/DME/IRU required.

Critical DME

EMO, VRB on BUVAK 1V, TUGSO 1V
EMO, VRB, BGS on GONGO 2V
VRB on IXUKO 1V

Non RNAV 1 ACFT:

Report "UNABLE RNAV" at first contact to ATC.
Expect OMNIDIRECTIONAL DEPARTURE and/or
vectoring to be provided by ATC

OMNIDIRECTIONAL DEPARTURE:

Climb on R-227 BGS VOR to 5000 FT, turn to the
corresponding point or as cleared by ATC
MNM climb gradient of 5% (304 FT/NM) to 4000 FT

AFTER TAKE-OFF:

Immediately contact BURGAS APP

Strict compliance with departure procedures is necessary. If
unable to comply inform ATC in good time so that alternative
clearance can be issued.

WARNING:

When given a clearance to a level higher than the specified in
the SID, follow published SID profile, unless restrictions are
explicitly cancelled by ATC.

Climb:

MNM climb gradient of 5.5% (334 FT/NM) to 4000 FT for
BUVAK 1V, GONGO 2V and TUGSO 1V due to terrain.

MNM climb gradient of 5% (304 FT/NM) to 4000 FT for
ARNOV 3V and IXUKO 1V due to airspace restrictions.

P/T	WPT ID	Flyover	Track MAG (GEO)	DIST NM	Turn Direction	Speed KT	ALT FT	Additional requirements
ARNOV 3V								
ARNOV THREE VICTOR DEPARTURE								
<i>MNM climb gradient of 5% (304 FT/NM) to 4000FT AMSL.</i>								
CA	-	-	219°(224.4°T)	-	Right	-	500+	-
CF	BG610	-	227°(232.7°T)	11.5	Right	-	-	-
TF	BG611	-	287°(292.6°T)	7.0	Right	-	-	-
TF	BG503	-	329°(335.2°T)	11.5	Left	-	-	-
TF	ARNOV	-	287°(293.0°T)	13.0	-	-	-	-
BUVAK 1V								
BUVAK ONE VICTOR DEPARTURE								
<i>MNM climb gradient of 5.5% (334 FT/NM) to 4000FT AMSL.</i>								
CA	-	-	219°(224.4°T)	-	Right	200-	600+	MNM Bank angle 20°
DF	BG600	-	-	-	-	-	-	-
TF	BG601	-	344°(349.6°T)	4.0	-	-	6000-	-
TF	BG602	-	344°(349.6°T)	4.3	Right	-	-	-
TF	BUVAK	-	006°(011.5°T)	13.3	-	-	-	-
GONGO 2V								
GONGO TWO VICTOR DEPARTURE								
<i>MNM climb gradient of 5.5% (334 FT/NM) to 4000FT AMSL.</i>								
CA	-	-	219°(224.4°T)	-	Right	200-	600+	MNM Bank angle 20°
DF	BG600	-	-	-	-	-	-	-
TF	BG601	-	344°(349.6°T)	4.0	-	-	6000-	-
TF	BG602	-	344°(349.6°T)	4.3	Left	-	-	-
TF	GONGO	-	316°(322.1°T)	24.7	-	-	-	-
IXUKO 1V								
IXUKO ONE VICTOR DEPARTURE								
<i>MNM climb gradient of 5% (304 FT/NM) to 4000FT AMSL.</i>								
CA	-	-	219°(224.4°T)	-	Right	-	500+	-
CF	BG610	-	227°(232.7°T)	11.5	Right	-	-	-
TF	BG611	-	287°(292.6°T)	7.0	-	-	-	-
TF	IXUKO	-	287°(292.6°T)	18.3	-	-	-	-
TUGSO 1V								
TUGSO ONE VICTOR DEPARTURE								
<i>MNM climb gradient of 5.5% (334 FT/NM) to 4000FT AMSL.</i>								
CA	-	-	219°(224.4°T)	-	Right	200-	600+	MNM Bank angle 20°
DF	BG600	-	-	-	-	-	-	-
TF	BG601	-	344°(349.6°T)	4.0	-	-	6000-	-
TF	BG602	-	344°(349.6°T)	4.3	Right	-	-	-
TF	TUGSO	-	037°(042.5°T)	13.3	-	-	-	-

See page LBBG AD 2 - 61.1 for waypoint coordinates