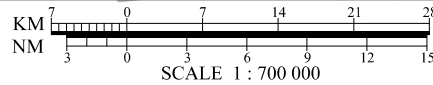
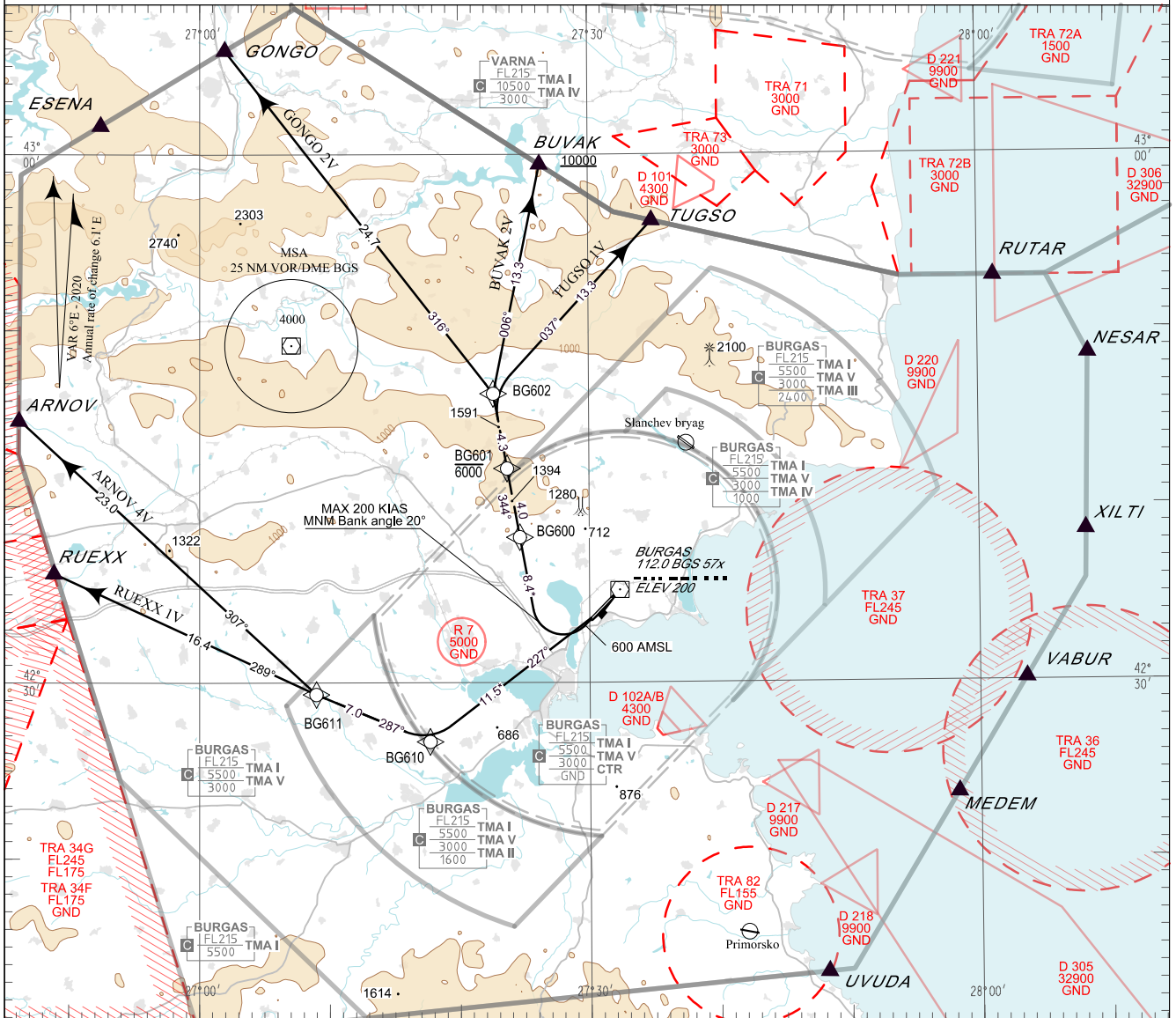


**STANDARD DEPARTURE CHART -  
INSTRUMENT (SID) - ICAO**

TRANSITION ALT 10500 FT  
TRANSITION LEVEL BY ATC

APP	125.340	TWR	119.655	ATIS	128.880
	126.780		122.805		
	378.350		336.400		
	121.500		121.500		
	243.000		243.000		

**BURGAS  
RNAV RWY 22 WEST**  
ARNOV 4V, BUVAK 2V, GONGO 2V,  
RUEXX IV, TUGSO IV



BEARINGS, TRACKS AND RADIALS ARE MAGNETIC  
ALTITUDES (HEIGHTS) AND ELEVATIONS IN FEET  
DISTANCES IN NM  
\* Distances marked by \* are approximate distances from DER

**PBN**

RNAV 1  
GNSS or DME/DME/IRU required.

**Critical DME**

EMO, VRB on BUVAK 2V, TUGSO IV  
EMO, VRB, BGS on GONGO 2V  
VRB on RUEXX IV

**Non RNAV 1 ACFT:**

Report "UNABLE RNAV" at first contact to ATC.  
Expect OMNIDIRECTIONAL DEPARTURE and/  
vectoring to be provided by ATC

**OMNIDIRECTIONAL DEPARTURE:**

Climb on R-227 BGS VOR to 5000 FT, turn to the  
corresponding point or as cleared by ATC  
MNM climb gradient of 5% (304 FT/NM) to 4000 FT

**AFTER TAKE-OFF:**

Immediately contact BURGAS APP

Strict compliance with departure procedures is necessary. If  
unable to comply inform ATC in good time so that alternative  
clearance can be issued.

**WARNING:**

When given a clearance to a level higher than the specified in  
the SID, follow published SID profile, unless restrictions are  
explicitly cancelled by ATC.

**Climb:**

MNM climb gradient of 5.5% (334 FT/NM) to 10000 FT for  
BUVAK 2V due to airspace restrictions.

MNM climb gradient of 5.5% (334 FT/NM) to 4000 FT for  
GONGO 2V and TUGSO IV due to terrain.

MNM climb gradient of 5.0% (304 FT/NM) to 4000 FT for  
ARNOV 4V and RUEXX IV due to airspace restrictions.

P/T	WPT ID	Flyover	Track MAG (GEO)	DIST NM	Turn Direction	Speed KT	ALT FT	Additional requirements
<b>ARNOV 4V</b>								
ARNOV FOUR VICTOR DEPARTURE								
<i>MNM climb gradient of 5% (304 FT/NM) to 4000FT AMSL.</i>								
CA	-	-	219°(224.4°T)	-	Right	-	500+	-
CF	BG610	-	227°(232.7°T)	11.5	Right	-	-	-
TF	BG611	-	287°(292.6°T)	7.0	Right	-	-	-
TF	BG503	-	329°(335.2°T)	11.5	Left	-	-	-
TF	ARNOV	-	307°(312.8°T)	23.0	-	-	-	-
<b>BUVAK 2V</b>								
BUVAK TWO VICTOR DEPARTURE								
<i>MNM climb gradient of 5.5% (334 FT/NM) to 10000FT AMSL.</i>								
CA	-	-	219°(224.4°T)	-	Right	200-	600+	MNM Bank angle 20°
DF	BG600	-	-	-	-	-	-	-
TF	BG601	-	344°(349.6°T)	4.0	-	-	6000-	-
TF	BG602	-	344°(349.6°T)	4.3	Right	-	-	-
TF	BUVAK	-	006°(011.5°T)	13.3	-	-	10000+	-
<b>GONGO 2V</b>								
GONGO TWO VICTOR DEPARTURE								
<i>MNM climb gradient of 5.5% (334 FT/NM) to 4000FT AMSL.</i>								
CA	-	-	219°(224.4°T)	-	Right	200-	600+	MNM Bank angle 20°
DF	BG600	-	-	-	-	-	-	-
TF	BG601	-	344°(349.6°T)	4.0	-	-	6000-	-
TF	BG602	-	344°(349.6°T)	4.3	Left	-	-	-
TF	GONGO	-	316°(322.1°T)	24.7	-	-	-	-
<b>RUEXX 1V</b>								
RUEXX ONE VICTOR DEPARTURE								
<i>MNM climb gradient of 5% (304 FT/NM) to 4000FT AMSL.</i>								
CA	-	-	219°(224.4°T)	-	Right	-	500+	-
CF	BG610	-	227°(232.7°T)	11.5	Right	-	-	-
TF	BG611	-	287°(292.6°T)	7.0	-	-	-	-
TF	RUEXX	-	289°(295.0°T)	16.4	-	-	-	-
<b>TUGSO 1V</b>								
TUGSO ONE VICTOR DEPARTURE								
<i>MNM climb gradient of 5.5% (334 FT/NM) to 4000FT AMSL.</i>								
CA	-	-	219°(224.4°T)	-	Right	200-	600+	MNM Bank angle 20°
DF	BG600	-	-	-	-	-	-	-
TF	BG601	-	344°(349.6°T)	4.0	-	-	6000-	-
TF	BG602	-	344°(349.6°T)	4.3	Right	-	-	-
TF	TUGSO	-	037°(042.5°T)	13.3	-	-	-	-

See page LBBG AD 2 - 61.1 for waypoint coordinates