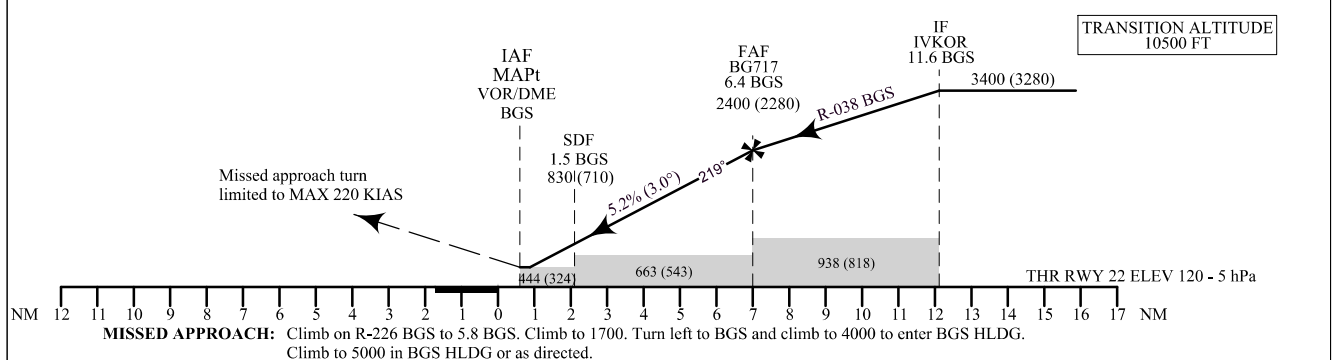
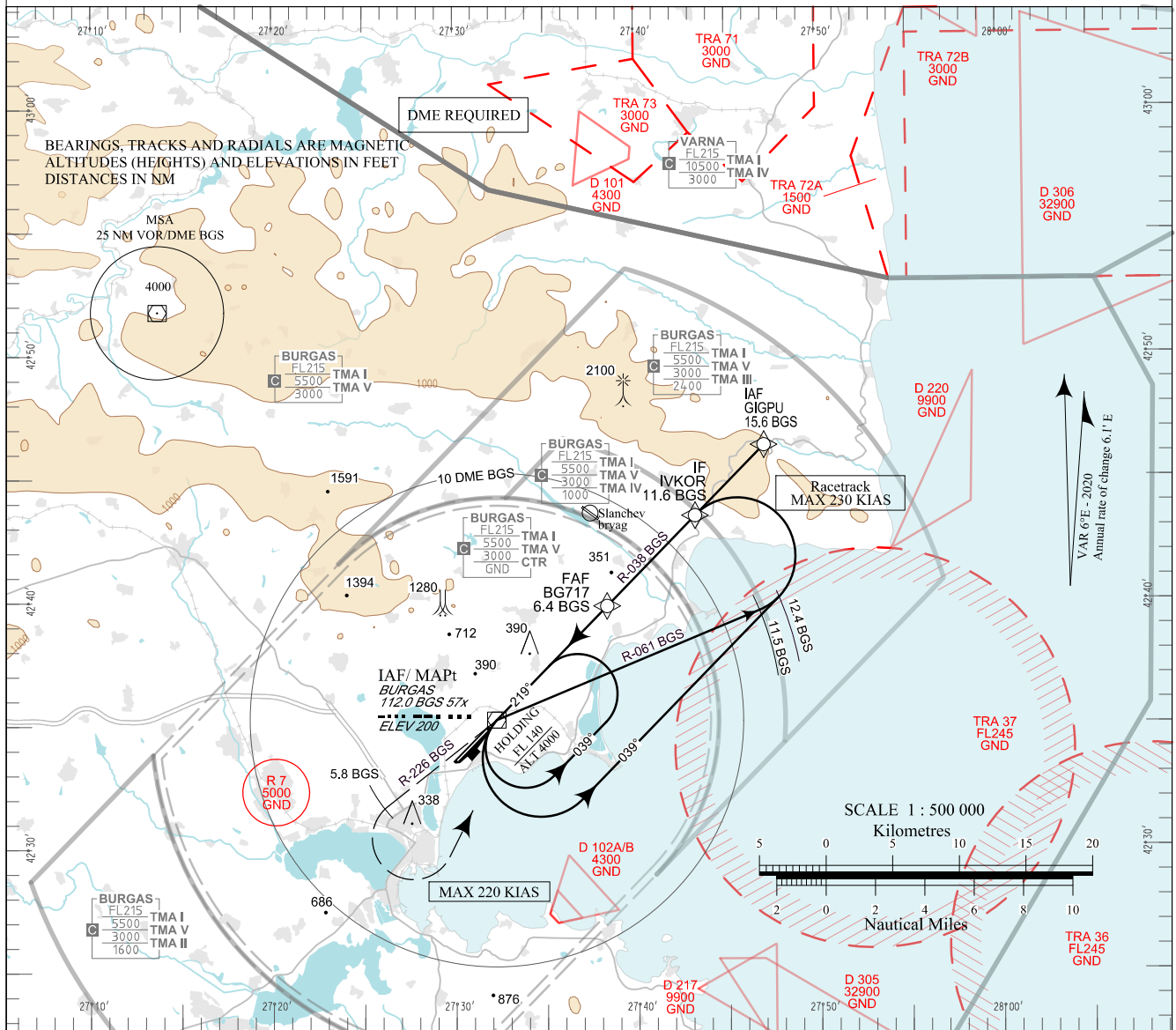


**INSTRUMENT  
APPROACH  
CHART - ICAO**

AERODROME ELEV 135 - 5 hPa  
THR RWY 22 ELEV 120 - 5 hPa  
OCH RELATED TO THR RWY 22 ELEV  
CIRCLING OCH RELATED TO AD ELEV

APP 125.340 TWR 119.655 ATIS 128.880  
126.780 122.805  
378.350 336.400  
121.500 121.500  
243.000 243.000

**BURGAS  
VOR  
RWY 22**



OCA (OCH)		A	B	C	D							
Straight-in Approach	m		140 (100)			DME BGS NM / km	6.0 / 11.1	5.0 / 9.3	4.0 / 7.4	3.0 / 5.6	2.0 / 3.7	1.0 / 1.9
	ft		450 (330)			DIST THR NM / km	6.6 / 12.2	5.6 / 10.3	4.6 / 8.5	3.6 / 6.6	2.6 / 4.8	1.6 / 2.9
SDF not received	m		205 (170)			ALT (HGT) m	690 (655)	595 (555)	495 (460)	400 (360)	300 (265)	205 (170)
	ft		670 (550)			ALT (HGT) ft	2260 (2140)	1940 (1820)	1630 (1510)	1310 (1190)	990 (870)	670 (550)
Circling	m	185 (145)	220 (180)	350 (310)	515 (475)							
	ft	600 (470)	700 (570)	1150 (1020)	1680 (1550)							

	GS	kt	60	80	100	120	140	160	180
FAF - MAPt 6.4 NM	min:sec	6:26	4:49	3:52	3:13	2:45	2:25	2:09	
Rate of descent	ft/min	318	425	531	637	743	849	955	

Timing is not authorized for defining MAPt

| See pages LBBG AD 2 - 61.1 and LBBG AD 2 - 61.2 for non-RNAV fixes coordinates and other data.