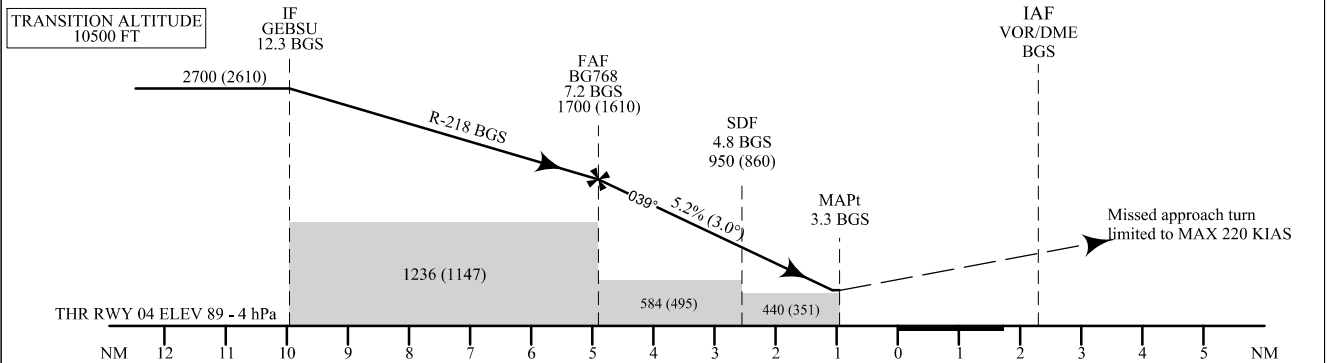
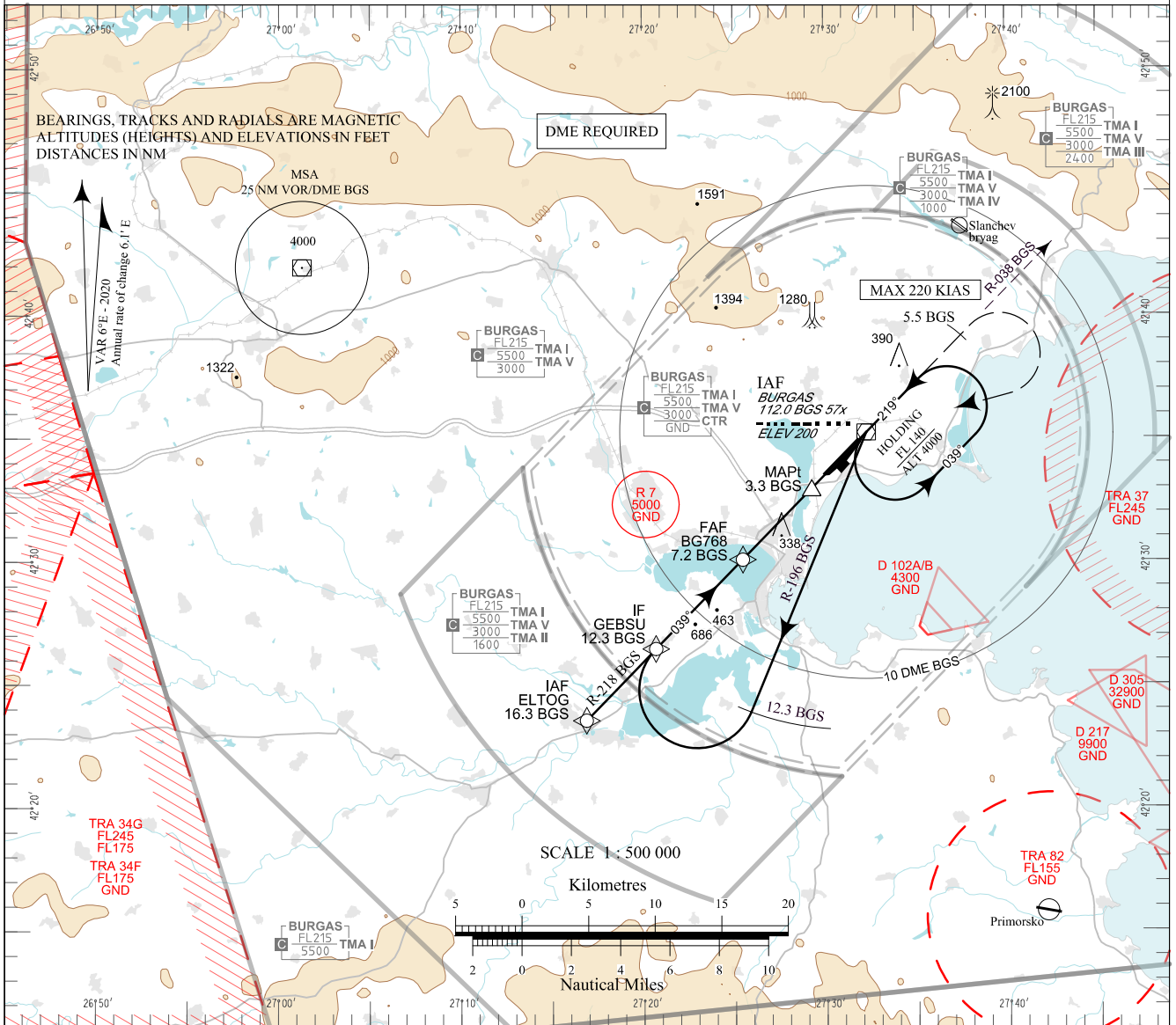


**INSTRUMENT
APPROACH
CHART - ICAO**

AERODROME ELEV 135 - 5 hPa
THR RWY 04 ELEV 89 - 4 hPa
OCH RELATED TO THR RWY 04 ELEV
CIRCLING OCH RELATED TO AD ELEV

APP 125.340 TWR 119.655 ATIS 128.880
126.780 122.805
378.350 336.400
121.500 121.500
243.000 243.000

**BURGAS
VOR
RWY 04**



OCA (OCH)		A	B	C	D
Straight-in Approach	m		135 (110)		
	ft		440 (360)		
SDF not received	m		185 (160)		
	ft		590 (500)		
Circling	m	185 (145)	220 (180)	350 (310)	515 (475)
	ft	600 (470)	700 (570)	1150 (1020)	1680 (1550)

DME BGS NM / km	7.0 / 13.0	6.0 / 11.1	5.0 / 9.3	4.0 / 7.4
DIST THR NM / km	4.7 / 8.7	3.7 / 6.9	2.7 / 5.0	1.7 / 3.1
ALT (HGT) m	500 (470)	400 (375)	305 (275)	205 (180)
ALT (HGT) ft	1640 (1550)	1320 (1230)	1000 (910)	680 (590)

GS	kt	60	80	100	120	140	160	180
FAF - MAPt 3.9 NM	min:sec	3:54	2:56	2:20	1:57	1:40	1:28	1:18
Rate of descent	ft/min	318	425	531	637	743	849	955

Timing is not authorized for defining MAPt

| See pages LBBG AD 2 - 61.1 and LBBG AD 2 - 61.2 for non-RNAV fixes coordinates and other data.