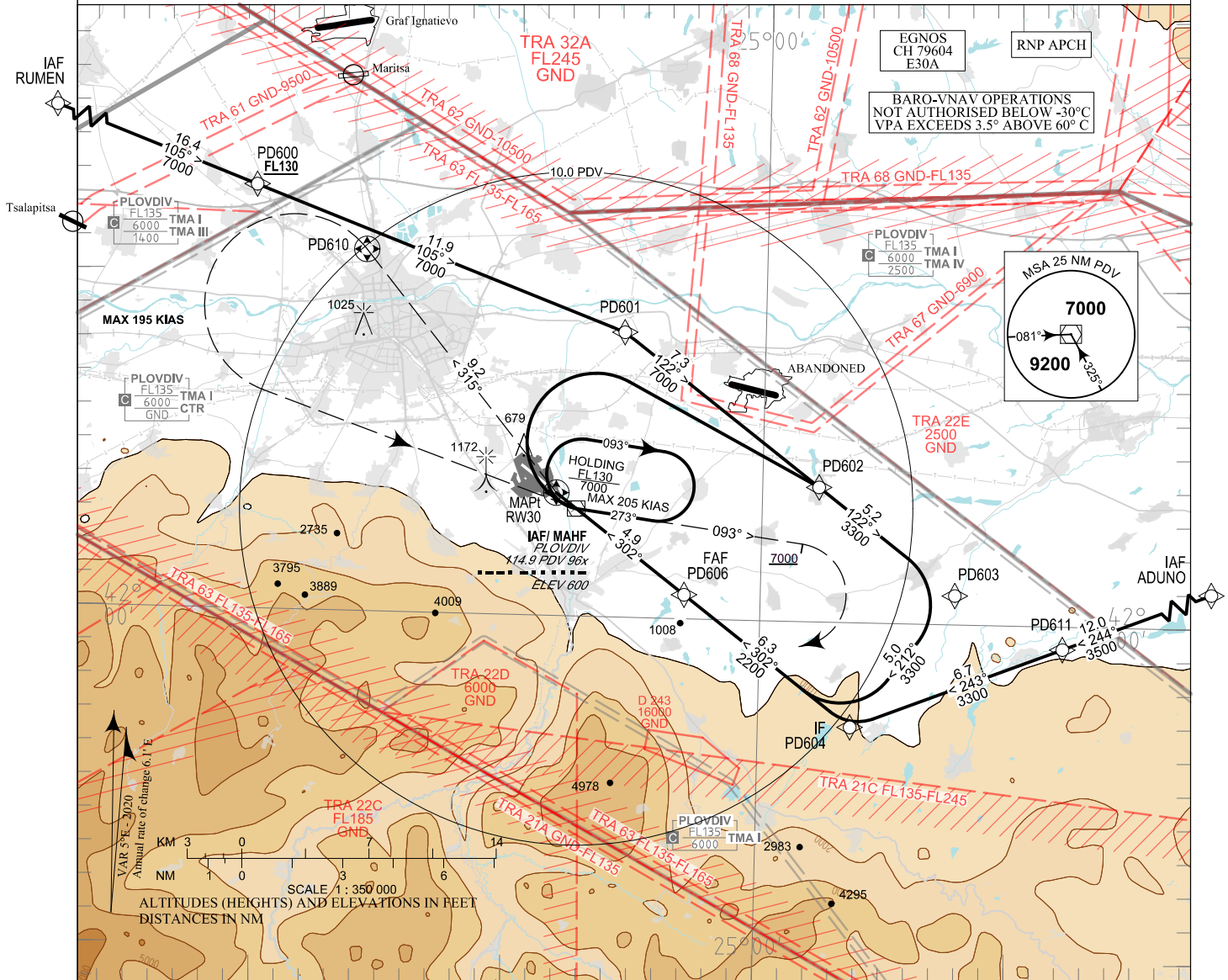


**INSTRUMENT
APPROACH
CHART - ICAO**

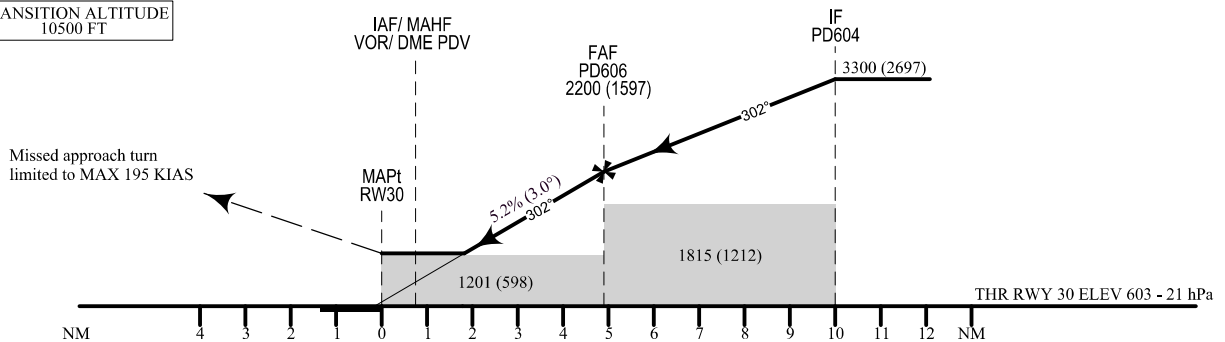
AERODROME ELEV 603 - 21 hPa TWR 133.600 ATIS 127.205
THR RWY 30 ELEV 603 - 21 hPa 125.500 362.550
OCH RELATED TO THR RWY 30 ELEV 121.500
CIRCLING OCH RELATED TO AD ELEV 243.000



**PLOVDIV
RNP
RWY 30**



TRANSITION ALTITUDE
10500 FT



MISSED APPROACH: Climb on track 315° to PD610. Climb to 2700 FT and turn left to PDV. Climb 7000 FT on course 093°. Turn right to PDV and hold.

OCA (OCH)		A	B	C	D
LPV	m	258 (74)	262 (78)	264 (80)	268 (83)
	ft	845 (241)	857 (253)	865 (261)	876 (272)
LNAV/VNAV Missed APCH gradient 2.5%	m	310 (125)	310 (125)	315 (130)	315 (135)
	ft	1010 (410)	1010 (410)	1020 (420)	1030 (430)
LNAV/VNAV Missed APCH gradient 3.5%	m	275 (90)	275 (90)	285 (100)	290 (110)
	ft	890 (290)	900 (300)	930 (320)	960 (350)
LNAV	m	375 (195)			
	ft	1230 (630)			
Circling NE of AD only	m	310 (125)	340 (155)	430 (250)	
	ft	1010 (410)	1110 (510)	1410 (810)	

DIST THR NM / km	4 / 7.4	3 / 5.6	2 / 3.7
ALT (HGT) m	585 (400)	490 (305)	390 (205)
ALT (HGT) ft	1920 (1310)	1600 (1000)	1280 (680)

GS	kt	60	80	100	120	140	160	180
FAF - MAPt 4.9 NM	min:sec	4:54	3:41	2:56	2:27	2:06	1:50	1:38
Rate of descent	ft/min	316	421	527	632	737	843	948

Timing is not authorized for defining MAPt

Instrument approach procedures

P/T	WPT ID	Flyover	Track MAG (GEO)	DIST NM	Turn Direction	Speed KT	ALT / FL FT
From IAF RUMEN							
IF	RUMEN / IAF	-	-	-	-	-	-
TF	PD600	-	105°(110.2°T)	16.4	-	-	F130+
TF	PD601	-	105°(110.5°T)	11.9	Right	-	-
TF	PD602	-	122°(127.3°T)	7.3	-	-	A7000+
TF	PD603	-	122°(127.4°T)	5.2	Right	-	-
TF	PD604 / IF	-	212°(217.4°T)	5.0	Right	190-	A3300+
TF	PD606 / FAF	-	302°(307.4°T)	6.3	-	-	A2200+
TF	RW30 / MAPt	Yes	302°(307.3°T)	4.9	Right	-	-
TF	PD610	Yes	315°(320.8°T)	9.2	-	-	-
CA	-	-	315°(320.8°T)	-	Left	195-	A2700+
DF	PDV	-	-	-	-	-	-
CA	-	-	093°(097.5°T)	-	-	-	A7000+
DF	PDV	-	-	-	Right	-	-
From IAF ADUNO							
IF	ADUNO / IAF	-	-	-	-	-	-
TF	PD611	-	244°(249.0°T)	12.0	-	-	A3500+
TF	PD604 / IF	-	243°(248.8°T)	6.7	Right	190-	A3300+
TF	PD606 / FAF	-	302°(307.4°T)	6.3	-	-	A2200+
TF	RW30 / MAPt	Yes	302°(307.3°T)	4.9	Right	-	-
TF	PD610	Yes	315°(320.8°T)	9.2	-	-	-
CA	-	-	315°(320.8°T)	-	Left	195-	A2700+
DF	PDV	-	-	-	-	-	-
CA	-	-	093°(097.5°T)	-	-	-	A7000+
DF	PDV	-	-	-	Right	-	-

P/T	WPT ID	Flyover	Track MAG (GEO)	DIST NM	Turn Direction	Speed KT	ALT / FL FT
From IAF PDV							
IF	PDV / IAF	Yes	-	-	-	-	-
DF	PD602	-	-	-	-	-	A7000+
TF	PD603	-	122°(127.4°T)	5.2	Right	-	-
TF	PD604 / IF	-	212°(217.4°T)	5.0	Right	190-	A3300+
TF	PD606 / FAF	-	302°(307.4°T)	6.3	-	-	A2200+
TF	RW30 / MAPt	Yes	302°(307.3°T)	4.9	Right	-	-
TF	PD610	Yes	315°(320.8°T)	9.2	-	-	-
CA	-	-	315°(320.8°T)	-	Left	195-	A2700+
DF	PDV	-	-	-	-	-	-
CA	-	-	093°(097.5°T)	-	-	-	A7000+
DF	PDV	-	-	-	Right	-	-

Holding

P/T	WPT ID	Flyover	Track MAG (GEO)	Time	Turn Direction	Speed KT	ALT / FL FT
HM	PDV	Yes	273°(277.8°T)	1min	Right	-	A7000+

See page LBDP AD 2 - 61.1 for waypoint coordinates

SBAS FAS Data Block Plovdiv RNP RWY 30

Data Field	Data Value
Operation Type	0
SBAS Provider	1 (EGNOS)
Airport Identifier	LBDP
Runway	30
Runway Letter	0 (None)
Approach Performance Designator	0
Route Indicator	
Reference Path Data Selector	0
Reference Path Identifier	E30A
LTP/FTP Latitude	420339.6295N
LTP/FTP Longitude	0245146.4895E
LTP/FTP Ellipsoidal Height (m)	226.2
FPAP Latitude	420428.6845N
Delta FPAP Latitude (seconds)	49.0550
FPAP Longitude	0245019.8290E
Delta FPAP Longitude (seconds)	-86.6605
Threshold Crossing Height (ft)	50.0
TCH Units Selector	0 (feet)
Glidepath Angle (degrees)	3.00
Course Width (m)	105.00
Length Offset (m)	8
HAL (m)	40.0
VAL (m)	50.0
CRC Value	F963D269
Data Block Hexadecimal Representation	10 04 10 02 0C 1E 00 00 01 30 33 05 DB F5 0C 12 73 85 AB 0A D6 1C 3E 7F 01 F7 5A FD F4 01 2C 01 64 01 C8 FA F9 63 D2 69

Required Additional Data (not CRC wrapped)

Data Field	Data Value
ICAO Code	LB
LTP/FTP Orthometric Height (m)	183.8