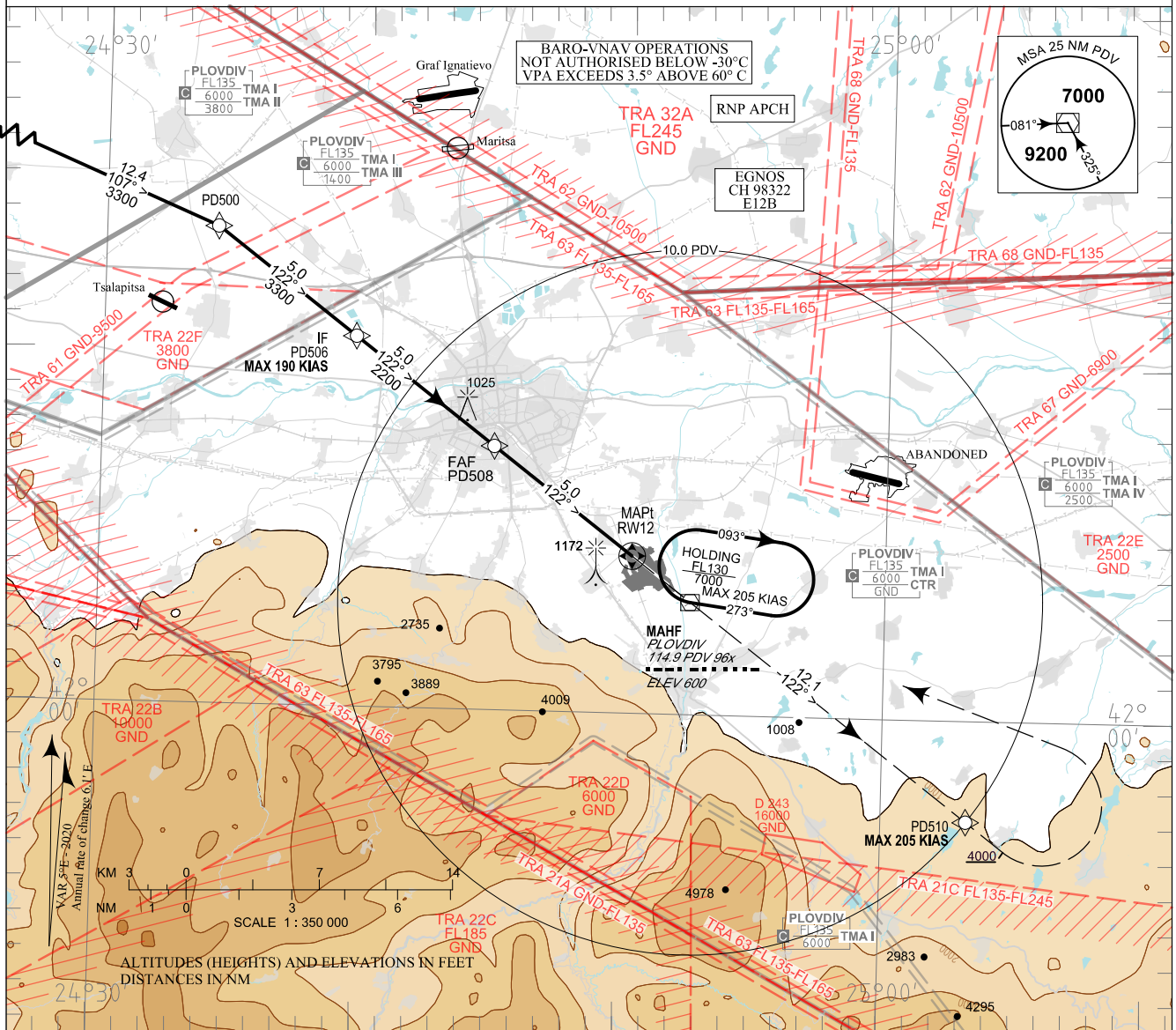
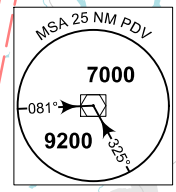
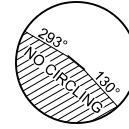


**INSTRUMENT  
APPROACH  
CHART - ICAO**

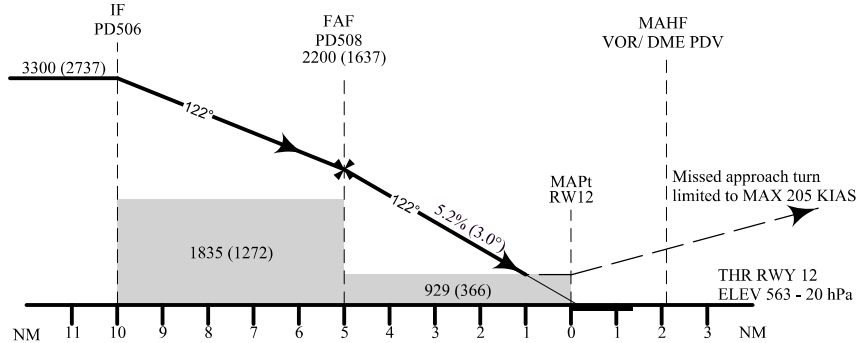
AERODROME ELEV 603 - 21 hPa TWR 133.600 ATIS 127.205  
THR RWY 12 ELEV 563 - 20 hPa 125.500 362.550  
OCH RELATED TO THR RWY 12 ELEV 121.500  
CIRCLING OCH RELATED TO AD ELEV 243.000

**PLOVDIV**

**RNP y  
RWY 12**



TRANSITION ALTITUDE  
10500 FT



**MISSED APPROACH:** Climb on 122° to PD510. Climb to 4000. Turn left to PDV climbing to 7000 and hold.

OCA (OCH)		A	B	C	D
LPV	m	243 (71)	246 (75)	249 (77)	252 (81)
	ft	795 (232)	807 (244)	815 (252)	826 (263)
LNAV/VNAV	m	250 (80)	255 (80)	255 (85)	260 (90)
	ft	820 (260)	830 (260)	840 (270)	850 (280)
LNAV	m	285 (115)			
	ft	930 (370)			
Circling NE of AD only	m	310 (125)	340 (155)	430 (250)	
	ft	1010 (410)	1110 (510)	1410 (810)	

DIST THR NM / km	5.0 / 9.3	4.0 / 7.4	3.0 / 5.6	2.0 / 3.7	1.0 / 1.9
ALT (HGT) m	670 (500)	575 (405)	480 (305)	380 (210)	285 (115)
ALT (HGT) ft	2200 (1640)	1880 (1320)	1570 (1010)	1250 (690)	940 (370)

GS	kt	60	80	100	120	140	160	180
FAF - MAPt 5.0 NM	min:sec	5:00	6:45	3:00	2:30	2:09	1:53	1:40
Rate of descent	ft/min	316	421	527	632	737	843	948

Timing is not authorized for defining MAPt

Instrument approach procedures

P/T	WPT ID	Flyover	Track MAG (GEO)	DIST NM	Turn Direction	Speed KT	ALT FT
<b>From IAF RUMEN</b>							
IF	RUMEN / IAF	-	-	-	-	-	-
TF	PD500	-	107°(112.4°T)	12.4	Right	-	-
TF	PD506 / IF	-	122°(127.0°T)	5.0	-	190-	3300+
TF	PD508 / FAF	-	122°(127.1°T)	5.0	-	-	2200+
TF	RW12 / MAPt	Yes	122°(127.2°T)	5.0	-	-	-
CF	PD510	Yes	122°(127.2°T)	12.1	-	-	-
CA	-	-	122°(127.2°T)	-	Left	205-	4000+
DF	PDV	-	-	-	-	-	7000+

Holding

P/T	WPT ID	Flyover	Track MAG (GEO)	Time	Turn Direction	Speed KT	ALT FT
HM	PDV	Yes	273°(277.8°T)	1min	Right	-	7000+

See page LBDP AD 2 - 61.1 for waypoint coordinates

**SBAS FAS Data Block Plovdiv RNP y RWY 12**

Data Field	Data Value
Operation Type	0
SBAS Provider	1 (EGNOS)
Airport Identifier	LBDP
Runway	12
Runway Letter	0 (None)
Approach Performance Designator	0
Route Indicator	Y
Reference Path Data Selector	0
Reference Path Identifier	E12B
LTP/FTP Latitude	420428.6760N
LTP/FTP Longitude	0245019.8765E
LTP/FTP Ellipsoidal Height (m)	214.1
FPAP Latitude	420339.6295N
Delta FPAP Latitude (seconds)	-49.0465
FPAP Longitude	0245146.4895E
Delta FPAP Longitude (seconds)	86.6130
Threshold Crossing Height (ft)	50.0
TCH Units Selector	0 (feet)
Glidepath Angle (degrees)	3.00
Course Width (m)	105.00
Length Offset (m)	0
HAL (m)	40.0
VAL (m)	50.0
CRC Value	91 ED 75 B7
Data Block Hexadecimal Representation	10 04 10 02 0C 0C C8 00 02 32 31 05 08 75 0E 12 C9 E0 A8 0A 5D 1C D3 80 FE AA A4 02 F4 01 2C 01 64 00 C8 FA 91 ED 75 B7

**Required Additional Data (not CRC wrapped)**

Data Field	Data Value
ICAO Code	LB
LTP/FTP Orthometric Height (m)	171.6

INTENTIONALLY LEFT BLANK