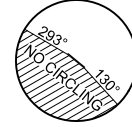
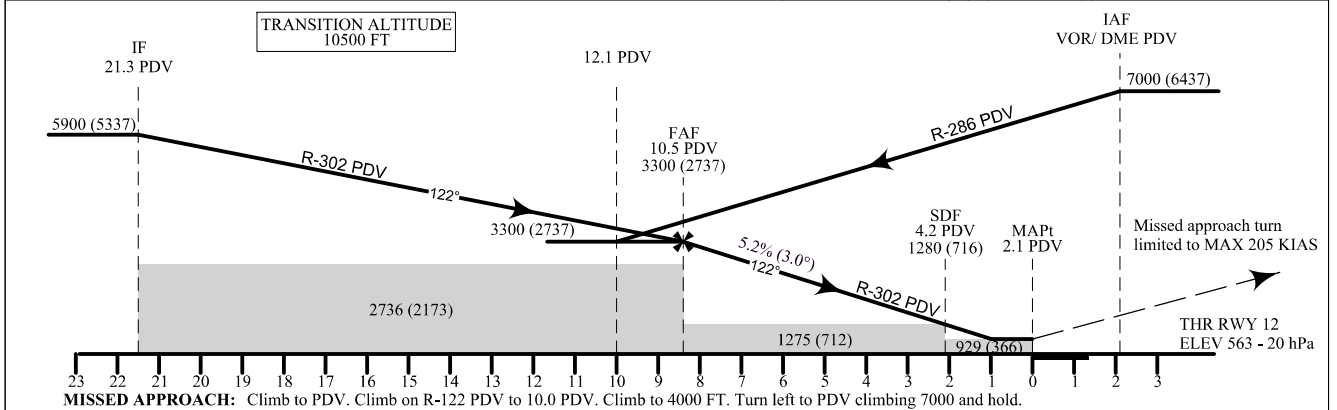
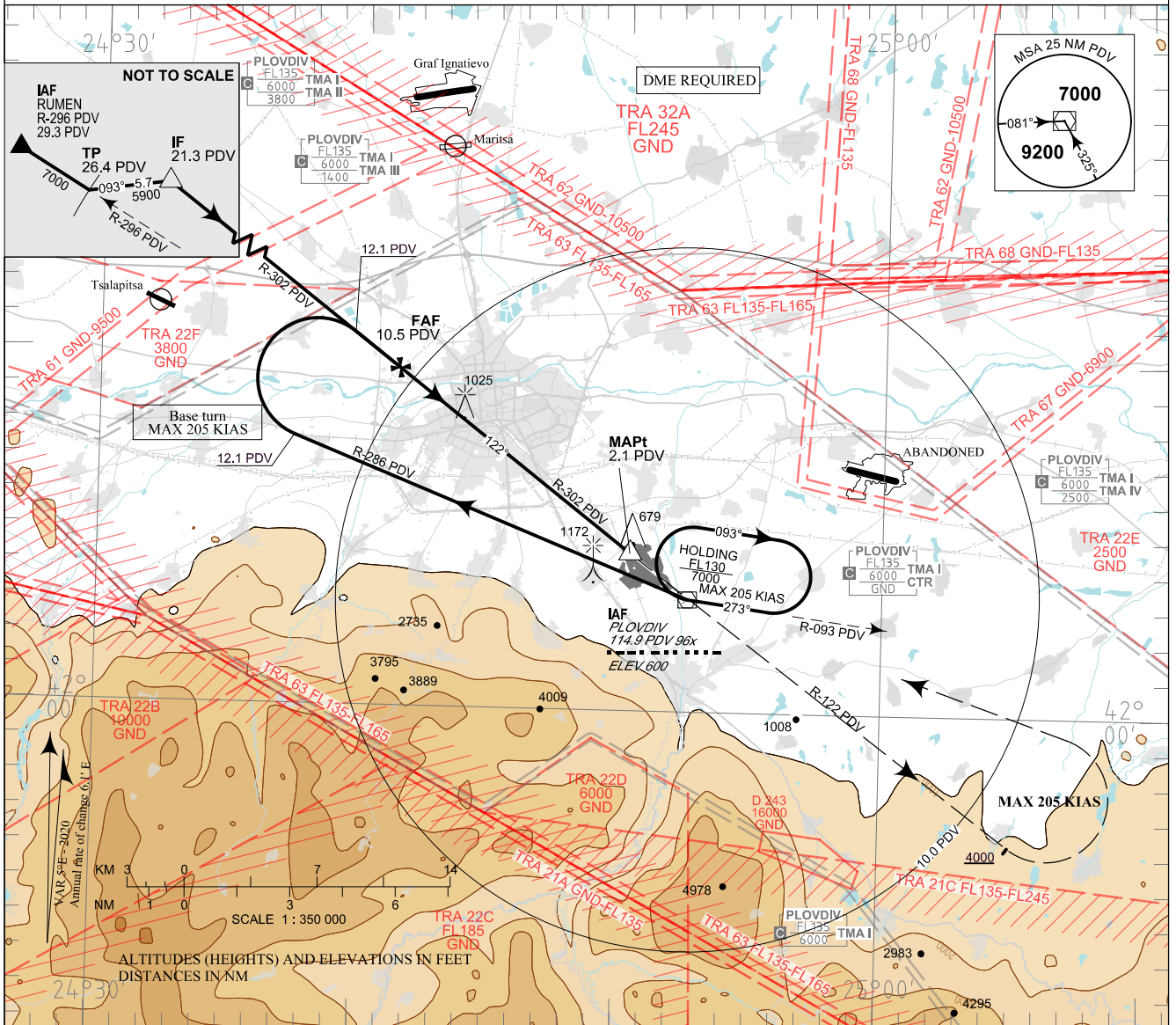


**INSTRUMENT  
APPROACH  
CHART - ICAO**

AERODROME ELEV 603 - 21 hPa      TWR 133.600      ATIS 127.205  
THR RWY 12 ELEV 563 - 20 hPa      125.500      362.550  
OCH RELATED TO THR RWY 12 ELEV      121.500      121.500  
CIRCLING OCH RELATED TO AD ELEV      243.000



**PLOVDIV  
VOR  
RWY 12**



DIST PDV NM / km	10.0 / 18.5	9.0 / 16.7	8.0 / 14.8	7.0 / 13.0	6.0 / 11.1	5.0 / 9.3	4.0 / 7.4	3.0 / 5.6
DIST THR NM / km	7.9 / 14.6	6.9 / 12.8	5.9 / 10.9	4.9 / 9.1	3.9 / 7.2	2.9 / 5.4	1.9 / 3.5	0.9 / 1.7
ALT (HGT) m	960 (785)	860 (690)	765 (595)	670 (495)	570 (400)	475 (305)	380 (210)	285 (110)
ALT (HGT) ft	3140 (2580)	2830 (2260)	2510 (1950)	2190 (1630)	1880 (1320)	1560 (1000)	1250 (680)	930 (370)

OCA (OCH)		A	B	C	D
VOR	m			285 (115)	
	ft			930 (370)	
SDF not received	m			390 (220)	
	ft			1280 (720)	
Circling NE of AD only	m	310 (125)	340 (155)	430 (250)	
	ft	1010 (410)	1110 (510)	1410 (810)	

GS	kt	60	80	100	120	140	160	180
FAF - MAPt 8.4 NM	min:sec	8:24	6:18	5:02	4:12	3:36	3:09	2:48
Rate of descent	ft/min	316	421	527	632	737	843	948

Timing is not authorized for defining MAPt

See page LBDP AD 2 - 61.1 for non-RNAV fixes coordinates and other data.