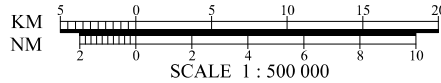
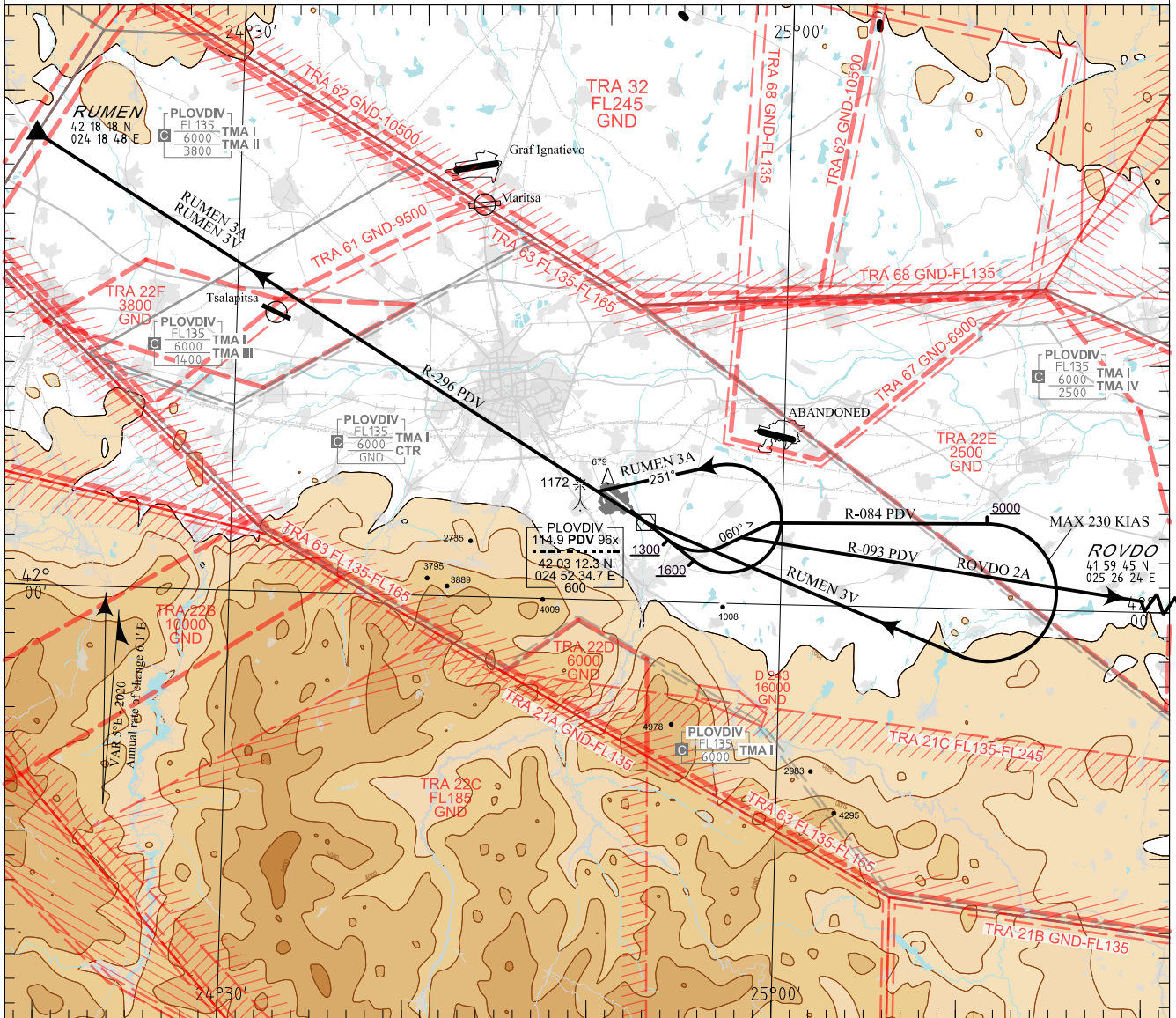


**STANDARD DEPARTURE CHART -  
INSTRUMENT (SID) - ICAO**

TRANSITION ALT 10500 FT  
TRANSITION LEVEL BY ATC

TWR 133.600  
125.500  
362.550  
121.500  
243.000

**PLOVDIV  
VOR RWY 12**  
RUMEN 3A, RUMEN 3V,  
ROVDO 2A



ALTITUDES (HEIGHTS) AND ELEVATIONS IN FEET  
DISTANCES IN NM

**Restrictions:**

Initial turns are limited to MAX 185 KIAS  
Do not turn before PDV VOR.  
In case of activation of TRA 67 or TRA 61  
RUMEN 3A may not be available.  
In case of activation of TRA 63 all departures may be required to  
maintain 10000 FT until leaving horizontal limits of TRA 63.

**AFTER TAKE-OFF:**

Proceed according to cleared departure procedure to the level  
assigned by ATC. Strictly follow the prescribed procedure profile,  
unless the restrictions are explicitly cancelled by ATC.  
If unable to comply inform ATC in good time so that alternative  
clearance can be issued.

**DEPARTURE PROCEDURES:**

**ROVDO 2A**  
ROVDO TWO ALPHA DEPARTURE  
MINM climb gradient 6.1% (371 FT/NM) to 10500 FT.

Climb straight ahead. At 1300 FT turn left to track 060°.  
Intercept R-093 PDV to ROVDO.

**RUMEN 3A**  
RUMEN THREE ALPHA DEPARTURE  
MINM climb gradient 5.0% (304 FT/NM) to 2500 FT.

Climb straight ahead. At 1600 FT turn left to track 251°.  
Intercept R-296 PDV to RUMEN.

**RUMEN 3V**  
RUMEN THREE VICTOR DEPARTURE  
MINM climb gradient 5.0% (304 FT/NM) to 8000 FT.

Climb straight ahead. At 1300 FT turn left to track 060°  
Intercept R-084 PDV. At 5000 FT, turn right (MAX 230 KIAS)  
to PDV climbing 10000 FT.  
Intercept R-296 PDV and maintain 10000 FT to RUMEN.

**INTENTIONALLY LEFT BLANK**