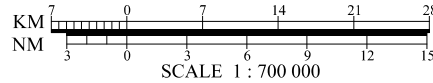
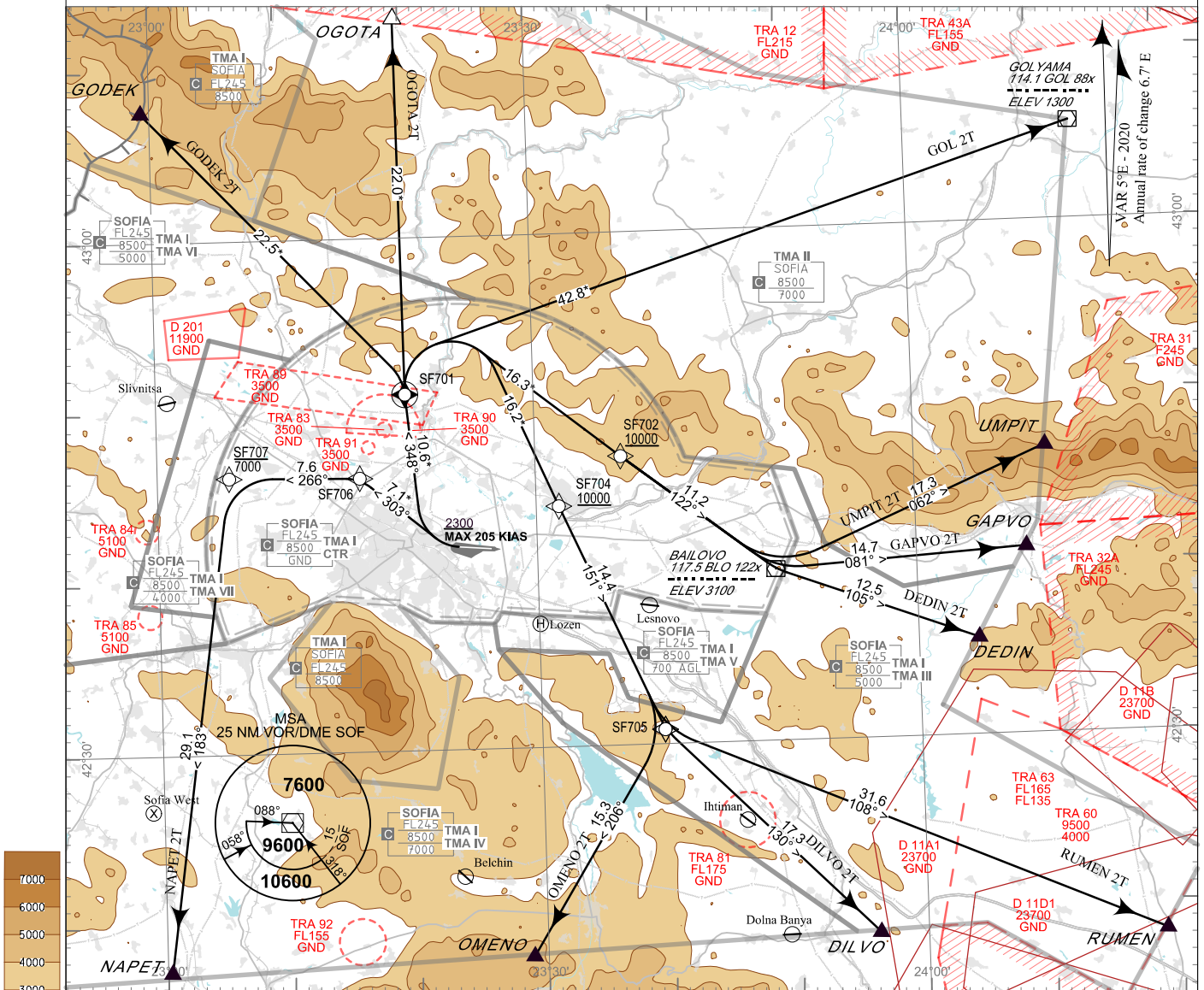


**STANDARD DEPARTURE
CHART - INSTRUMENT
(SID) - ICAO**

TRANSITION ALT 10500 FT APP 123.700 TWR 118.100 ATIS 126.680
TRANSITION LEVEL BY ATC 129.900 120.200
121.500 121.500
243.000 243.000

**SOFIA
RNAV Rwy 27**
DEDIN 2T, DILVO 2T, GAPVO 2T, GODEK 2T,
GOL 2T, NAPET 2T, OGOTA 2T, OMENO 2T,
RUMEN 2T, UMPIT 2T



ALTITUDES (HEIGHTS) AND ELEVATIONS IN FEET
DISTANCES IN NM
Distances marked by * are approximate distances from DER

PBN

RNAV 1
GNSS or DME/DME/IRU required

Critical DME

BLO, VIT	GODEK 2T, OMENO 2T, DILVO 2T
BLO, VIT, GRN	GOL 2T
BLO, VIT, KAL	OGOTA 2T, NAPET 2T
BLO, VIT, KAL, GOL	DEDIN 2T; UMPIT 2T; GAPVO 2T
BLO, VIT, KAL PDV, ROZ	RUMEN 2T

Non RNAV 1 ACFT:

Report "UNABLE RNAV" at first contact to ATC.
Expect conventional or omnidirectional DEP and/
vectoring to be provided by ATC.

GENERAL REQUIREMENTS:

After take-off immediately contact SOFIA APPROACH

In case of activation of TRA 63 departures to RUMEN might be required to climb FL170 before the boundary of TRA 63. If unable to comply inform ATC in good time so that alternative clearance can be issued.

WARNING:

When given a clearance to a level higher than the specified in the SID, follow published SID profile, unless restrictions are explicitly cancelled by ATC.

OMNIDIRECTIONAL DEPARTURE:

Climb on track 285° to 7500 FT, turn to the corresponding point or as cleared by ATC
MNM climb gradient of 5% (304 FT/NM) to 9600 FT

P/T	WPT ID	Flyover	Track MAG (GEO)	DIST NM	Turn Direction	Speed KT	ALT FT	Additional Requirements
GODEK 2T GODEK TWO TANGO DEPARTURE								
<i>MNM climb gradient of 5% (304FT/NM) to 10000FT AMSL due to terrain.</i>								
CA	-	-	269°(274.7°T)	-	Right	205-	2300+	-
CF	SF701	Yes	348°(353.0°T)	-	Left	-	-	-
DF	GODEK	-	-	-	-	-	-	-
OGOTA 2T OGOTA TWO TANGO DEPARTURE								
<i>MNM climb gradient of 5% (304FT/NM) to 7400FT AMSL due to terrain.</i>								
CA	-	-	269°(274.7°T)	-	Right	205-	2300+	-
CF	SF701	Yes	348°(353.0°T)	-	-	-	-	-
DF	OGOTA	-	-	-	-	-	-	-
GOL 2T GOLYAMA TWO TANGO DEPARTURE								
<i>MNM climb gradient of 5% (304FT/NM) to 8500FT AMSL due to terrain.</i>								
CA	-	-	269°(274.7°T)	-	Right	205-	2300+	-
CF	SF701	Yes	348°(353.0°T)	-	Right	-	-	-
DF	GOL	-	-	-	-	-	-	-
UMPIT 2T UMPIT TWO TANGO DEPARTURE								
<i>MNM climb gradient of 5% (304FT/NM) to 9000FT AMSL due to terrain.</i>								
CA	-	-	269°(274.7°T)	-	Right	205-	2300+	-
CF	SF701	Yes	348°(353.0°T)	-	Right	-	-	-
DF	SF702	-	-	-	-	-	10000+	-
TF	BLO	-	122°(127.6°T)	11.2	Left	-	-	-
TF	UMPIT	-	062°(066.9°T)	17.3	-	-	-	-

P/T	WPT ID	Flyover	Track MAG (GEO)	DIST NM	Turn Direction	Speed KT	ALT FT	Additional Requirements
GAPVO 2T GAPVO TWO TANGO DEPARTURE								
<i>MNM climb gradient of 5% (304FT/NM) to 9000FT AMSL due to terrain.</i>								
CA	-	-	269°(274.7°T)	-	Right	205-	2300+	-
CF	SF701	Yes	348°(353.0°T)	-	Right	-	-	-
DF	SF702	-	-	-	-	-	10000+	-
TF	BLO	-	122°(127.6°T)	11.2	Left	-	-	-
TF	GAPVO	-	081°(086.5°T)	14.7	-	-	-	-
DEDIN 2T DEDIN TWO TANGO DEPARTURE								
<i>MNM climb gradient of 5% (304FT/NM) to 9000FT AMSL due to terrain.</i>								
CA	-	-	269°(274.7°T)	-	Right	205-	2300+	-
CF	SF701	Yes	348°(353.0°T)	-	Right	-	-	-
DF	SF702	-	-	-	-	-	10000+	-
TF	BLO	-	122°(127.6°T)	11.2	Left	-	-	-
TF	DEDIN	-	105°(110.3°T)	12.5	-	-	-	-
RUMEN 2T RUMEN TWO TANGO DEPARTURE								
<i>MNM climb gradient of 5% (304FT/NM) to 10000FT AMSL due to airspace restrictions.</i>								
CA	-	-	269°(274.7°T)	-	Right	205-	2300+	-
CF	SF701	Yes	348°(353.0°T)	-	Right	-	-	-
DF	SF704	-	-	-	-	-	10000+	-
TF	SF705	-	151°(156.1°T)	14.4	Left	-	-	-
TF	RUMEN	-	108°(113.2°T)	31.6	-	-	-	5% to FL170 if LBTRA63 is active
DILVO 2T DILVO TWO TANGO DEPARTURE								
<i>MNM climb gradient of 5% (304FT/NM) to 10000FT AMSL due to airspace restrictions.</i>								
CA	-	-	269°(274.7°T)	-	Right	205-	2300+	-
CF	SF701	Yes	348°(353.0°T)	-	Right	-	-	-
DF	SF704	-	-	-	-	-	10000+	-
TF	SF705	-	151°(156.1°T)	14.4	Left	-	-	-
TF	DILVO	-	130°(134.9°T)	17.3	-	-	-	-

P/T	WPT ID	Flyover	Track MAG (GEO)	DIST NM	Turn Direction	Speed KT	ALT FT	Additional Requirements
OMENO 2T OMENO TWO TANGO DEPARTURE								
<i>MNM climb gradient of 5% (304FT/NM) to 10000FT AMSL due to airspace restrictions.</i>								
CA	-	-	269°(274.7°T)	-	Right	205-	2300+	-
CF	SF701	Yes	348°(353.0°T)	-	Right	-	-	-
DF	SF704	-	-	-	-	-	10000+	-
TF	SF705	-	151°(156.1°T)	14.4	Right	-	-	-
TF	OMENO	-	206°(211.7°T)	15.3	-	-	-	-
NAPET 2T NAPET TWO TANGO DEPARTURE								
<i>MNM climb gradient of 5% (304FT/NM) to 7000FT AMSL due to terrain.</i>								
CA	-	-	269°(274.7°T)	-	Right	205-	2300+	-
CF	SF706	-	303°(308.0°T)	-	Left	-	-	-
TF	SF707	-	266°(271.1°T)	7.6	Left	-	7000-	-
TF	NAPET	-	183°(187.9°T)	29.1	-	-	-	-

See page LBSF AD 2 - 61.1 for waypoint coordinates