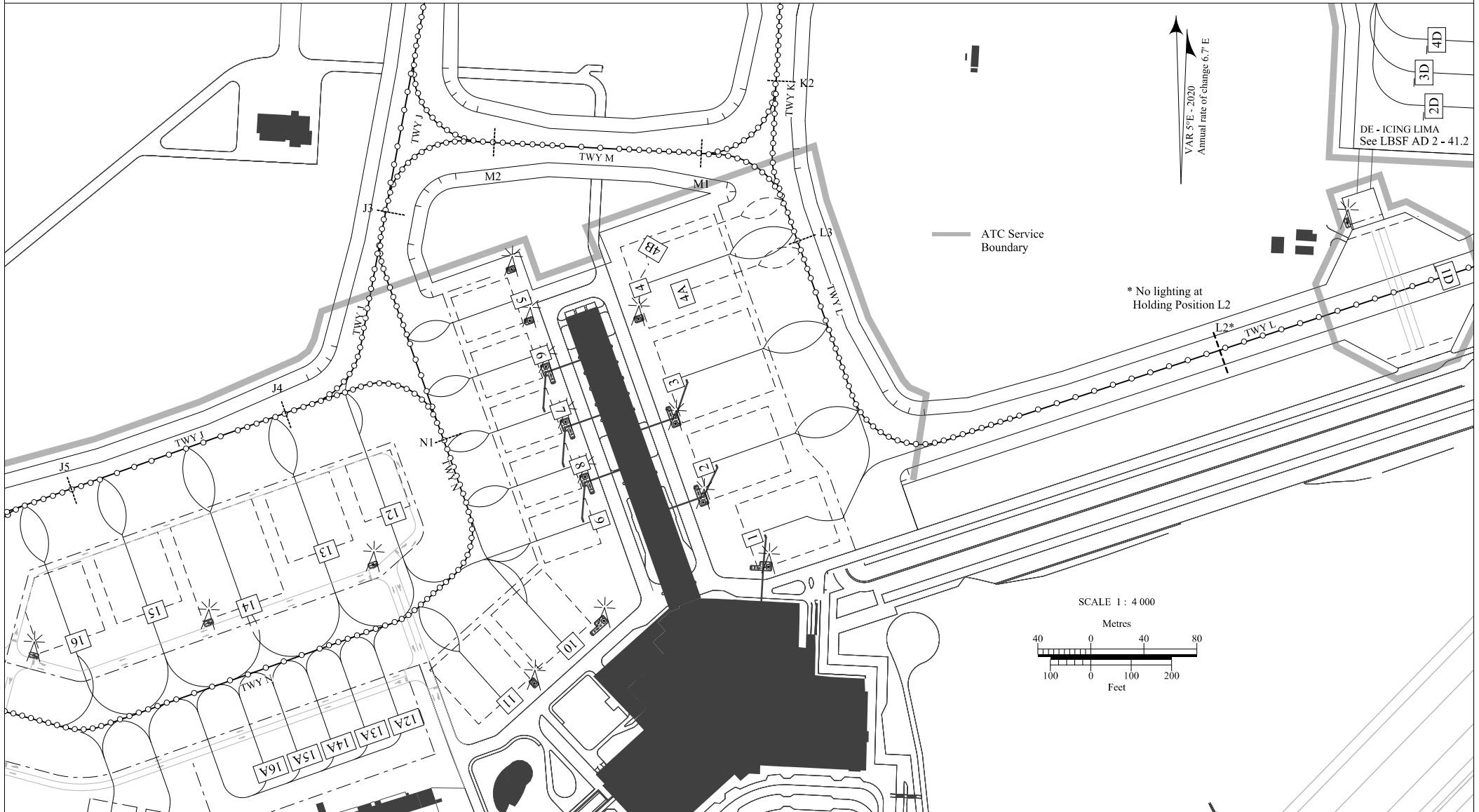


**AIRCRAFT PARKING/
DOCKING CHART - ICAO**

APRON ELEVATION 1749 ft

TWR 118.100 336.400
120.200
121.500 243.000

**SOFIA
PDC - 2**



Aircraft stands/INS checkpoints

| Stand number | Geographical coordinates |
|---------------------|---------------------------------|
| 1 | 424124.83N 0232453.67E |
| 2 | 424126.54N 0232452.00E |
| 3 | 424128.60N 0232450.86E |
| 4 | 424130.93N 0232449.84E |
| 4A | 424130.70N 0232451.05E |
| 4B | 424131.15N 0232449.87E |
| 5 | 424130.63N 0232445.57E |
| 6 | 424129.27N 0232446.16E |
| 7 | 424127.91N 0232446.75E |
| 8 | 424126.55N 0232447.35E |
| 9 | 424125.19N 0232447.94E |
| 10 | 424122.23N 0232446.93E |
| 11 | 424120.93N 0232444.86E |
| 12 | 424125.60N 0232441.21E |
| 12A | 424121.15N 0232441.21E |
| 13 | 424124.54N 0232439.04E |
| 13A | 424120.89N 0232440.08E |
| 14 | 424123.51N 0232436.33E |
| 14A | 424120.55N 0232438.98E |
| 15 | 424123.18N 0232433.31E |
| 15A | 424120.29N 0232437.85E |
| 16 | 424122.47N 0232430.76E |
| 16A | 424120.01N 0232436.73E |