

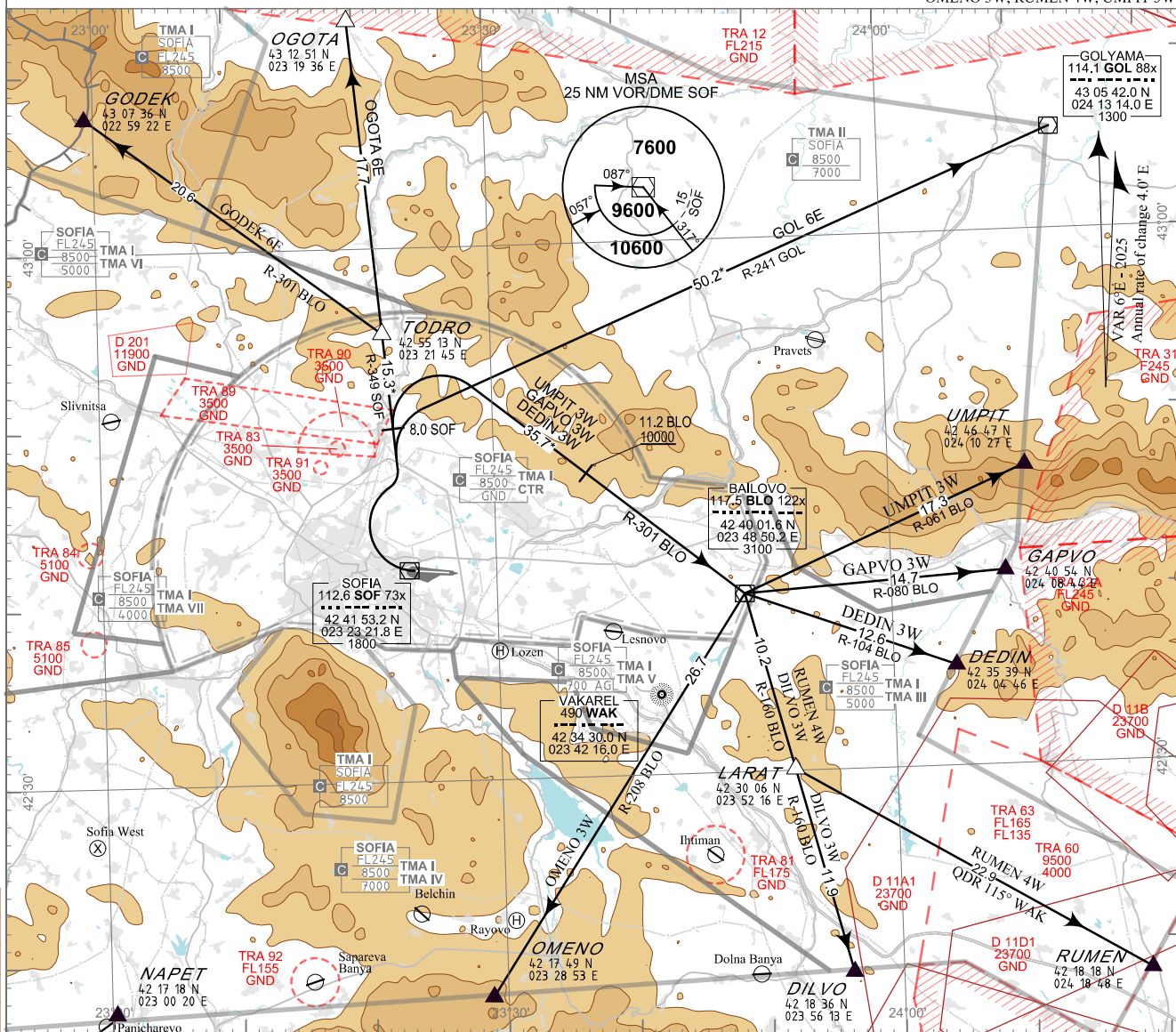
**STANDARD DEPARTURE
CHART - INSTRUMENT
(SID) - ICAO**

Sofia Approach	Sofia Tower	Sofia Delivery
123.705	118.255	127.255
129.905	127.255	
247.575	336.400	
121.500	121.500	Sofia ATIS
243.000	243.000	126.680

SOFIA
Vasil Levski - Sofia
RWY 27

DEDIN 3W, DILVO 3W, GAPVO 3W,
GODEK 6E, GOL 6E, OGOTA 6E,
OMENO 3W, RUMEN 4W, UMPIT 3W

TRANSITION ALT 10500 FT
TRANSITION LEVEL BY ATC



ALTITUDES (HEIGHTS) AND ELEVATIONS IN FEET
DISTANCES IN NM
Distances marked by * are approximate distances from DER

Initial Climb:

Climb straight ahead to 2300 FT then turn according to the cleared departure procedure. Turn before DER is allowed after passing 2300 FT and establishing MNM climb gradient of 5% (304 FT/NM).

After take-off immediately contact SOFIA APPROACH

ROUTES:

Proceed according to cleared departure procedure climbing to level assigned by ATC. See the descriptions on the verso of the chart.
In case of activation of TRA 63 departures to RUMEN might be required to climb FL170 before the boundary of TRA 63.
If unable to comply inform ATC in good time so that alternative clearance can be issued. Expect omnidirectional DEP and/or vectoring to be provided by ATC.

WARNING:

When given a clearance to a level higher than the specified in the SID, follow published SID profile, unless restrictions are explicitly cancelled by ATC.

Restrictions:

Initial turn is limited to MAX 205 KIAS.

OMNIDIRECTIONAL DEPARTURE:

Climb on track 285° to 7500 FT, turn to the corresponding point or as cleared by ATC
MNM climb gradient of 5% (304 FT/NM) to 9600 FT

DEDIN 3W

DEDIN THREE WHISKEY DEPARTURE

MNM climb gradient 5.0% (304FT/NM) to 10000FT.

Climb straight ahead to 2300FT. Turn right to intercept R-349 SOF. At 8.0 SOF turn right to intercept R-301 BLO to BLO. At BLO turn left and proceed on R-104 BLO to DEDIN.

Cross 11.2 DME BLO at or ABV 10000FT.

DILVO 3W

DILVO THREE WHISKEY DEPARTURE

MNM climb gradient 5.0% (304FT/NM) to 10000FT.

Climb straight ahead to 2300FT. Turn right to intercept R-349 SOF. At 8.0 SOF turn right to intercept R-301 BLO to BLO. At BLO turn right and proceed on R-160 BLO to DILVO.

Cross 11.2 DME BLO at or ABV 10000FT.

GAPVO 3W

GAPVO THREE WHISKEY DEPARTURE

MNM climb gradient 5.0% (304FT/NM) to 10000FT.

Climb straight ahead to 2300FT. Turn right to intercept R-349 SOF. At 8.0 SOF turn right to intercept R-301 BLO to BLO. At BLO turn left and proceed on R-080 BLO to GAPVO.

Cross 11.2 DME BLO at or ABV 10000FT.

GODEK 6E

GODEK SIX ECHO DEPARTURE

MNM climb gradient 5.0% (304FT/NM) to 10000FT due to airspace restrictions.

Climb straight ahead to 2300FT. Turn right to intercept R-349 SOF to TODRO. Turn left to intercept R-301 BLO to GODEK.

GOL 6E

GOLYAMA SIX ECHO DEPARTURE

MNM climb gradient 5.0% (304FT/NM) to 8000FT.

Climb straight ahead to 2300FT. Turn right to intercept R-349 SOF. Turn right to intercept R-241 GOL to GOL.

OGOTA 6E

OGOTA SIX ECHO DEPARTURE

MNM climb gradient 5.0% (304FT/NM) to 8000FT.

Climb straight ahead to 2300 FT. Turn right to intercept R-349 SOF to OGOTA.

OMENO 3W

OMENO THREE WHISKEY DEPARTURE

MNM climb gradient 5.0% (304FT/NM) to 10000FT.

Climb straight ahead to 2300FT. Turn right to intercept R-349 SOF. At 8.0 SOF turn right to intercept R-301 BLO to BLO. At BLO turn right and proceed on R-208 BLO to OMENO.

Cross 11.2 DME BLO at or ABV 10000FT.

RUMEN 4W

RUMEN FOUR WHISKEY DEPARTURE

MNM climb gradient 5.0% (304FT/NM) to 10000FT.

Climb straight ahead to 2300FT. Turn right to intercept R-349 SOF. At 8.0 SOF turn right to intercept R-301 BLO to BLO. At BLO turn right and proceed on R-160 BLO to LARAT. At LARAT turn left to intercept QDR 115° WAK to RUMEN.

Cross 11.2 DME BLO at or ABV 10000 FT.

UMPIT 3W

UMPIT THREE WHISKEY DEPARTURE

MNM climb gradient 5.0% (304FT/NM) to 10000FT.

Climb straight ahead to 2300FT. Turn right to intercept R-349 SOF. At 8.0 SOF turn right to intercept R-301 BLO to BLO. At BLO turn left and proceed on R-061 BLO to UMPIT.

Cross 11.2 DME BLO at or ABV 10000 FT.

See page LBSF AD 2 - 61.1 for waypoint coordinates