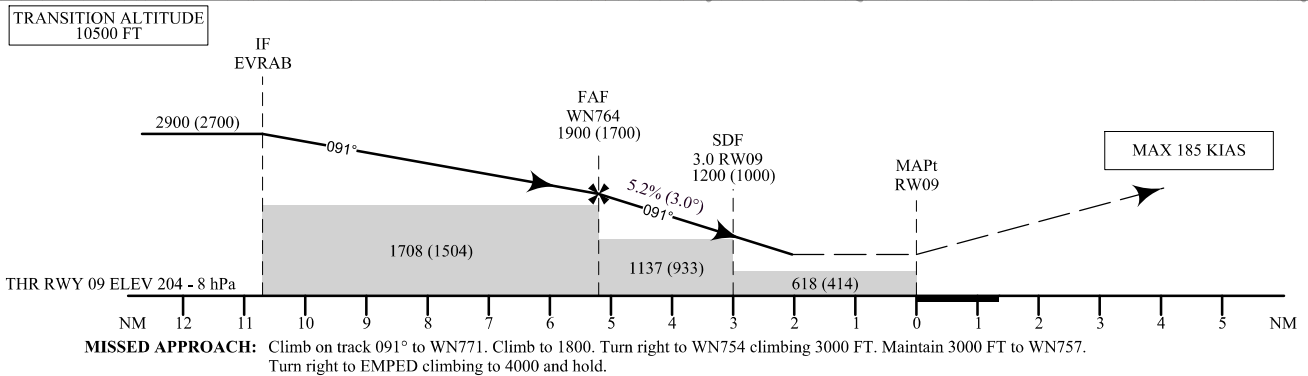
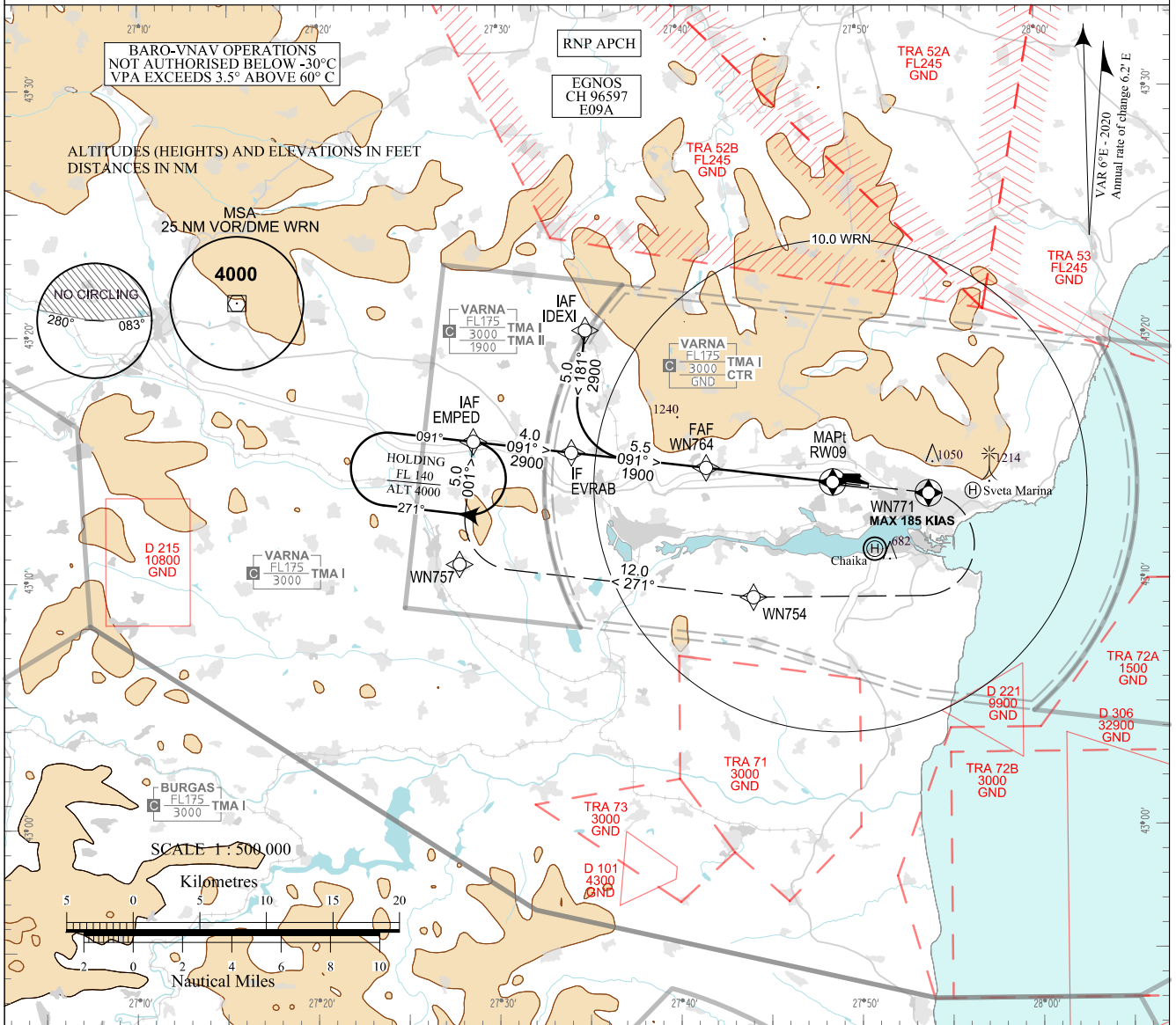


**INSTRUMENT  
APPROACH  
CHART - ICAO**

AERODROME ELEV 230 - 9 hPa      APP 124.600      TWR 119.500      ATIS 126.880  
THR RWY 09 ELEV 204 - 8 hPa      130.450      118.900  
233.250      296.725  
OCH RELATED TO THR RWY 09 ELEV 121.500      121.500  
CIRCLING OCH RELATED TO AD ELEV 243.000      243.000

**VARNA  
RNP  
RWY 09**



**MISSED APPROACH:** Climb on track 091° to WN771. Climb to 1800. Turn right to WN754 climbing 3000 FT. Maintain 3000 FT to WN757. Turn right to EMPED climbing to 4000 and hold.

OCA (OCH)	LPV				LNAV/VNAV				LNAV	
	A	B	C	D	A	B	C	D	A, B, C, D	
Missed APCH gradient 2.5%	m	167 (104)	170 (108)	173 (111)	176 (114)	220 (160)	225 (165)	230 (170)	235 (175)	290 (230)
	ft	545 (341)	557 (353)	565 (361)	576 (372)	720 (520)	730 (530)	750 (550)	770 (570)	950 (750)
Missed APCH gradient 4.0%	m	152 (90)	156 (94)	158 (96)	162 (100)	170 (110)	175 (115)	180 (120)	190 (130)	275 (215)
	ft	498 (294)	510 (306)	518 (314)	529 (325)	560 (360)	570 (370)	590 (390)	630 (430)	900 (700)
Missed APCH gradient 5.0%	m	133 (71)	137 (75)	139 (77)	143 (81)	150 (90)	155 (95)	160 (100)	175 (115)	260 (200)
	ft	436 (232)	448 (244)	456 (252)	467 (263)	490 (290)	500 (300)	530 (330)	560 (360)	850 (650)
Circling	m	215 (145)	275 (205)	350 (280)	400 (330)					
	ft	700 (470)	900 (670)	1150 (920)	1300 (1070)					

DIST THR NM / km	5 / 9.3	4 / 7.4	3 / 5.6
ALT (HGT) ft	1840 (1630)	1520 (1320)	1200 (1000)
ALT (HGT) m	560 (500)	465 (400)	365 (305)

GS	kt	60	80	100	120	140	160	180
FAF - MAPt 5.2 NM	min:sec	5:12	3:54	3:07	2:36	2:14	1:57	1:44
Rate of descent	ft/min	316	421	527	632	737	843	948

Timing is not authorized for defining MAPt

Instrument approach procedures

P/T	WPT ID	Flyover	Track MAG (GEO)	DIST NM	Turn Direction	Speed KT	ALT FT
<b>From IAF IDEXI</b>							
IF	IDEXI / IAF	-	-	-	-	220-	4000+
TF	EVRAB / IF	-	181°(186.7°T)	5.0	Left	190-	2900+
TF	WN764 / FAF	-	091°(096.7°T)	5.5	-	-	1900+
TF	RW09 / MAPt	Yes	091°(096.8°T)	5.2	-	-	-
CF	WN771	Yes	091°(096.9°T)	-	-	-	-
CA	-	-	091°(096.9°T)	-	Right	185-	1800+
DF	WN754	-	-	-	Right	-	-
TF	WN757	-	271°(276.9°T)	12.0	Right	220-	3000-
TF	EMPED MAHF	-	001°(006.7°T)	5.0	-	220-	4000+
<b>From IAF EMPED</b>							
IF	EMPED / IAF	-	-	-	-	220-	4000+
TF	EVRAB / IF	-	091°(096.7°T)	4.0	-	190-	2900+
TF	WN764 / FAF	-	091°(096.7°T)	5.5	-	-	1900+
TF	RW09 / MAPt	Yes	091°(096.8°T)	5.2	-	-	-
CF	WN771	Yes	091°(096.9°T)	-	-	-	-
CA	-	-	091°(096.9°T)	-	Right	185-	1800+
DF	WN754	-	-	-	Right	-	-
TF	WN757	-	271°(276.9°T)	12.0	Right	220-	3000-
TF	EMPED MAHF	-	001°(006.7°T)	5.0	-	220-	4000+

Holding

P/T	WPT ID	Flyover	Track MAG (GEO)	DIST NM	Turn Direction	Speed KT	ALT FT
HM	EMPED	Yes	091°(096.6°T)	1 min	Right	-	4000+

See page LBWN AD 2 - 61.1 for waypoint coordinates

SBAS FAS Data Block Varna RNP RWY 09

Data Field	Data Value
Operation Type	0
SBAS Provider	1 (EGNOS)
Airport Identifier	LBWN
Runway	09
Runway Letter	0 (None)
Approach Performance Designator	0
Route Indicator	
Reference Path Data Selector	0
Reference Path Identifier	E09A
LTP/FTP Latitude	431359.9430N
LTP/FTP Longitude	0274835.6670E
LTP/FTP Ellipsoidal Height (m)	99.1
FPAP Latitude	431350.0925N
Delta FPAP Latitude (seconds)	-9.8505
FPAP Longitude	0275026.3990E
Delta FPAP Longitude (seconds)	110.7320
Threshold Crossing Height (ft)	50.0
TCH Units Selector	0 (feet)
Glidepath Angle (degrees)	3.00
Course Width (m)	105.00
Length Offset (m)	0
HAL (m)	40.0
VAL (m)	50.0
CRC Value	97 0E 53 40
Data Block Hexadecimal Representation	10 0E 17 02 0C 09 00 00 01 39 30 05 0E C1 8D 12 A6 49 EF 0B DF 17 0B B3 FF 18 61 03 F4 01 2C 01 64 00 C8 FA 97 0E 53 40

Required Additional Data (not CRC wrapped)

Data Field	Data Value
ICAO Code	LB
LTP/FTP Orthometric Height (m)	62.3

**INTENTIONALLY LEFT BLANK**