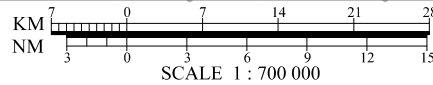
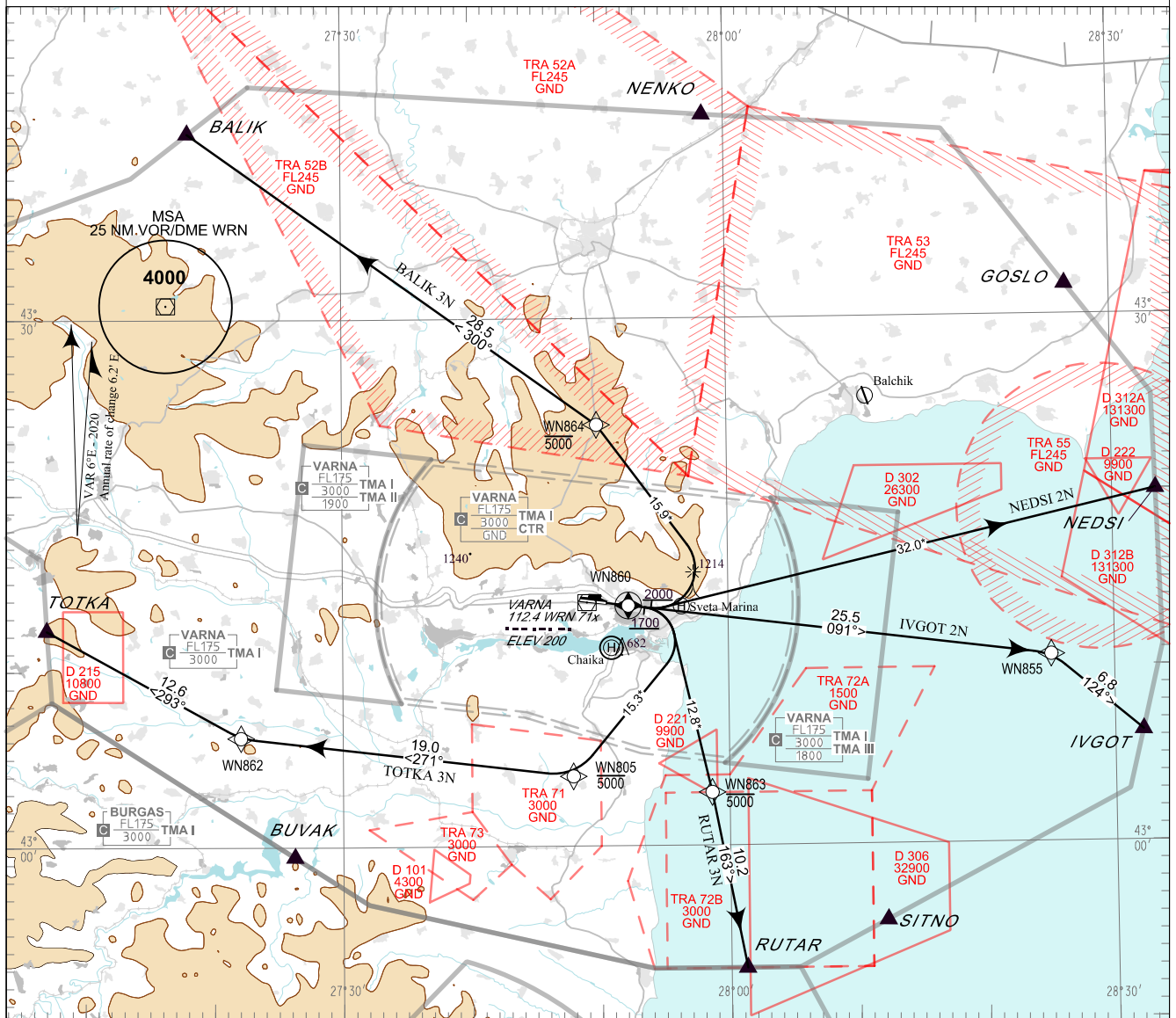


**STANDARD DEPARTURE CHART -  
INSTRUMENT (SID) - ICAO**

TRANSITION ALT 10500 FT APP 124.600 TWR 119.500 ATIS 126.880  
TRANSITION LEVEL BY ATC 130.450 118.900  
233.250 296.725  
121.500 121.500  
243.000 243.000

**VARNA**  
**RNAV Rwy 09**  
BALIK 3N, IVGOT 2N,  
NEDSI 2N, RUTAR 3N, TOTKA 3N



ALTITUDES (HEIGHTS) AND ELEVATIONS IN FEET  
DISTANCES IN NM  
\* Distances marked by \* are approximate distances from DER

**PBN**

RNAV 1  
GNSS or DME/DME/IRU required.

**Critical DME**

EMO, VRB on BALIK 3N, TOTKA 3N  
EMO, CND on NEDSI 2N  
EMO on IVGOT 2N, RUTAR 3N

**Non RNAV 1 ACFT:**

Report "UNABLE RNAV" at first contact to ATC.  
Expect OMNIDIRECTIONAL DEPARTURE and/or  
vectoring to be provided by ATC.

**OMNIDIRECTIONAL DEPARTURE:**

Climb on track 107° to 4000 FT, turn to the corresponding  
point or as cleared by ATC  
MNM climb gradient of 5% (304 FT/NM) to 4000 FT

**AFTER TAKE-OFF:**

Immediately contact VARNA APP.

Strict compliance with departure procedures is necessary.  
If unable to comply inform ATC in good time so that  
alternative clearance can be issued.

**WARNING:**

When given a clearance to a level higher than the specified in  
the SID, follow published SID profile, unless restrictions are  
explicitly cancelled by ATC.

P/T	WPT ID	Flyover	Track MAG (GEO)	DIST NM	Turn Direction	Speed KT	ALT FT	Additional Requirements
<b>BALIK 3N</b> BALIK THREE NOVEMBER DEPARTURE								
<i>MNM climb gradient of 5.0% (304 FT/NM) to 4000FT AMSL.</i>								
CA	-	-	091°(096.9°T)	-	Left	230-	2000+	-
DF	WN864	-	-	-	Left	-	5000-	-
TF	BALIK	-	300°(305.8°T)	28.5	-	-	-	-
<b>IVGOT 2N</b> IVGOT TWO NOVEMBER DEPARTURE								
<i>MNM climb gradient of 5.0% (304 FT/NM) to 4000FT AMSL.</i>								
TF	WN855	-	091°(096.9°T)	25.5	Right	-	-	-
TF	IVGOT	-	124°(130.0°T)	6.8	-	-	-	-
<b>NEDSI 2N</b> NEDSI TWO NOVEMBER DEPARTURE								
<i>MNM climb gradient of 5.0% (304 FT/NM) to 4000FT AMSL.</i>								
CA	-	-	091°(096.9°T)	-	Left	230-	1700+	-
DF	NEDSI	-	-	-	-	-	-	-
<b>RUTAR 3N</b> RUTAR THREE NOVEMBER DEPARTURE								
<i>MNM climb gradient of 5.0% (304 FT/NM) to 4000FT AMSL.</i>								
TF	WN860	Yes	091°(096.9°T)	1.3	-	-	-	-
CA	-	-	091°(096.9°T)	-	Right	230-	1700+	-
DF	WN863	-	-	-	-	-	5000-	-
TF	RUTAR	-	163°(169.2°T)	10.2	-	-	-	-
<b>TOTKA 3N</b> TOTKA THREE NOVEMBER DEPARTURE								
<i>MNM climb gradient of 5.0% (304 FT/NM) to 4000FT AMSL.</i>								
TF	WN860	Yes	091°(096.9°T)	1.3	-	-	-	-
CA	-	-	091°(096.9°T)	-	Right	230-	1700+	-
DF	WN805	-	-	-	Right	-	5000-	-
TF	WN862	-	271°(276.9°T)	19.0	Right	-	-	-
TF	TOTKA	-	293°(299.0°T)	12.6	-	-	-	-

See page LBWN AD 2 - 61.1 for waypoint coordinates