

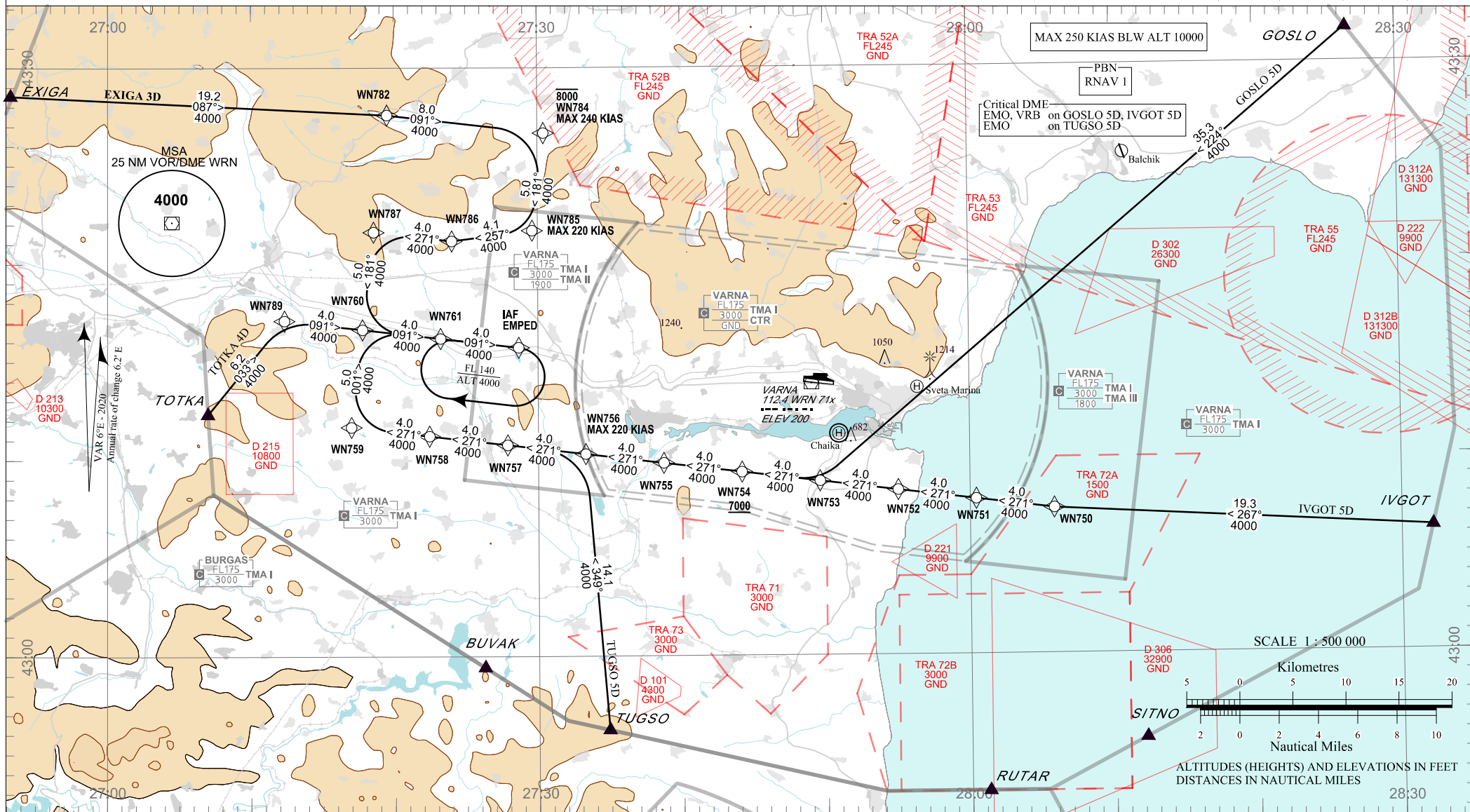
**STANDARD ARRIVAL CHART - INSTRUMENT
(STAR) - ICAO**

TRANSITION ALT 10500 FT
TRANSITION LEVEL BY ATC

APP 124.600 233.250 TWR 119.500 296.725 ATIS 126.880
130.450 118.900
121.500 243.000 121.500 243.000

**VARNA
RNAV RWY 09**

GOSLO 5D, IVGOT 5D, TUGSO 5D, TOTKA 4D, EXIGA 3D



P/T	WPT ID	Flyover	Track MAG (GEO)	DIST NM	Turn Direction	Speed KT	ALT FT	Additional Requirements
EXIGA 3D EXIGA THREE DELTA ARRIVAL								
IF	EXIGA	-	-	-	-	-	-	-
TF	WN782	-	087°(092.7°T)	19.2	-	-	-	-
TF	WN784	-	091°(096.6°T)	8.0	Right	240-	8000-	-
TF	WN785	-	181°(186.7°T)	5.0	Right	220-	-	-
TF	WN786	-	257°(262.7°T)	4.1	Right	-	-	-
TF	WN787	-	271°(276.7°T)	4.0	Left	-	-	-
TF	WN760	-	181°(186.6°T)	5.0	Left	-	-	-
TF	WN761	-	091°(096.6°T)	4.0	-	-	-	-
TF	EMPED / IAF	-	091°(096.7°T)	4.0	-	-	4000+	-
GOSLO 5D GOSLO FIVE DELTA ARRIVAL								
IF	GOSLO	-	-	-	-	-	-	-
TF	WN753	-	224°(229.9°T)	35.3	Right	-	-	-
TF	WN754	-	271°(276.9°T)	4.0	-	-	7000+	-
TF	WN755	-	271°(276.9°T)	4.0	-	-	-	-
TF	WN756	-	271°(276.8°T)	4.0	-	220-	-	-
TF	WN757	-	271°(276.8°T)	4.0	-	-	-	-
TF	WN758	-	271°(276.7°T)	4.0	-	-	-	-
TF	WN759	-	271°(276.7°T)	4.0	Right	-	-	-
TF	WN760	-	001°(006.6°T)	5.0	Right	-	-	-
TF	WN761	-	091°(096.6°T)	4.0	-	-	-	-
TF	EMPED / IAF	-	091°(096.7°T)	4.0	-	-	4000+	-
TOTKA 4D TOTKA FOUR DELTA ARRIVAL								
IF	TOTKA	-	-	-	-	-	-	-
TF	WN789	-	033°(039.1°T)	6.2	Right	-	-	-
TF	WN760	-	091°(096.5°T)	4.0	-	-	-	-
TF	WN761	-	091°(096.6°T)	4.0	-	-	-	-
TF	EMPED / IAF	-	091°(096.7°T)	4.0	-	-	4000+	-

P/T	WPT ID	Flyover	Track MAG (GEO)	DIST NM	Turn Direction	Speed KT	ALT FT	Additional Requirements
TUGSO 5D TUGSO FIVE DELTA ARRIVAL								
IF	TUGSO	-	-	-	-	-	-	-
TF	WN756	-	349°(355.3°T)	14.1	Left	220-	-	-
TF	WN757	-	271°(276.8°T)	4.0	-	-	-	-
TF	WN758	-	271°(276.7°T)	4.0	-	-	-	-
TF	WN759	-	271°(276.6°T)	4.0	Right	-	-	-
TF	WN760	-	001°(006.6°T)	5.0	Right	-	-	-
TF	WN761	-	091°(096.6°T)	4.0	-	-	-	-
TF	EMPED / IAF	-	091°(096.7°T)	4.0	-	-	4000+	-
IVGOT 5D IVGOT FIVE DELTA ARRIVAL								
IF	IVGOT	-	-	-	-	-	-	-
TF	WN750	-	267°(273.4°T)	19.3	Right	-	-	-
TF	WN751	-	271°(277.1°T)	4.0	-	-	-	-
TF	WN752	-	271°(277.1°T)	4.0	-	-	-	-
TF	WN753	-	271°(277.0°T)	4.0	-	-	-	-
TF	WN754	-	271°(276.9°T)	4.0	-	-	7000+	-
TF	WN755	-	271°(276.9°T)	4.0	-	-	-	-
TF	WN756	-	271°(276.8°T)	4.0	-	220-	-	-
TF	WN757	-	271°(276.8°T)	4.0	-	-	-	-
TF	WN758	-	271°(276.7°T)	4.0	-	-	-	-
TF	WN759	-	271°(276.6°T)	4.0	Right	-	-	-
TF	WN760	-	001°(006.6°T)	5.0	Right	-	-	-
TF	WN761	-	091°(096.6°T)	4.0	-	-	-	-
TF	EMPED / IAF	-	091°(096.7°T)	4.0	-	-	4000+	-

See page LBWN AD 2 - 61.1 for waypoint coordinates

INTENTIONALLY LEFT BLANK